

The Paperyard, Albion Way

Offers Over £375,000

🛏️ 2 🚿 2 🚗 2



An exceptional Two Double Bedroom Apartment in Central Horsham boasting a Private Balcony, Allocated Parking, 18ft Master Bedroom Suite and a bright 23ft Open Plan Kitchen/Living Area.

Tenure: Leasehold

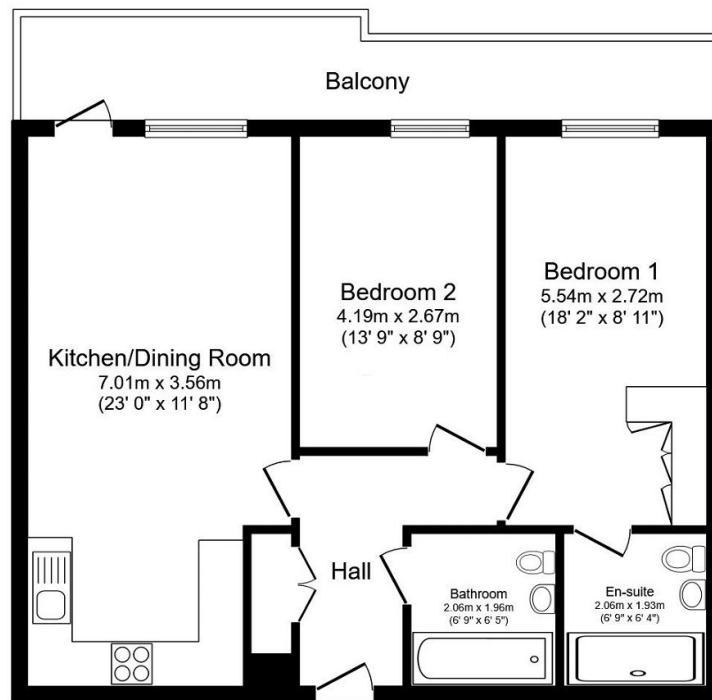
Lease Length: 245 years from 1 January 2020

Council Tax Band: D

EPC Rating: Current C - Potential C

Key Features

- Two Large Double Bedrooms
- Private Balcony
- Lifts To All Floors
- Allocated Parking
- 18ft Master Suite
- 23ft Open Plan Kitchen/Living Area
- Luxurious Bathroom & En Suite
- Prime Central Location
- Landscaped Roof Garden
- Built By Berkeley Homes in 2020



Floor Plan

Total floor area 67.6 m² (728 sq.ft.) approx

This plan is for illustration purposes only and may not be representative of the property. Plan not to scale. Powered by PropertyBox