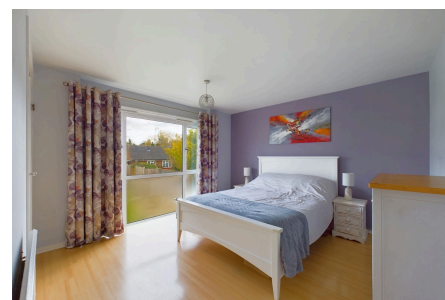


Sussex Court, Horsham

Offers Over £260,000

2 1 1



A spacious First Floor Spacious Apartment located at the end of a small Cul De Sac in Central Horsham, boasting Two Large Double Bedrooms, a 22ft Living Room and a Study/Store.

Tenure: Leasehold

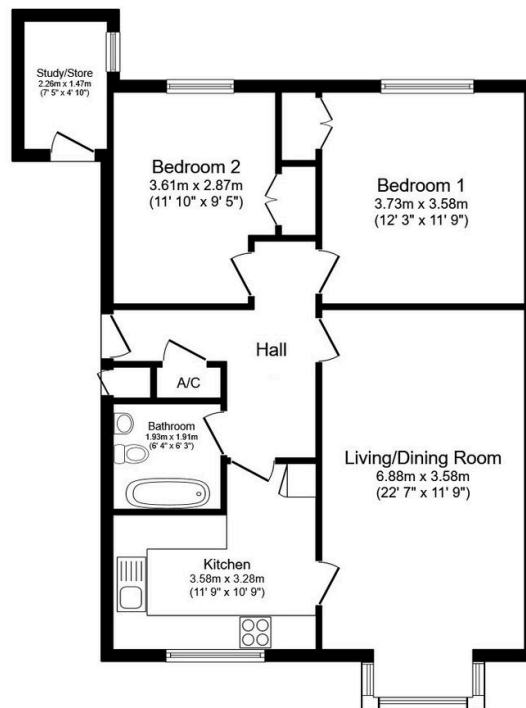
Lease Length: 99 years as of 25th Dec 2023

Council Tax Band: C

EPC: Current C - Potential B

Key Features

- Watch Our Video Tour
- 22ft Living/Dining Room
- Stylish Family Bathroom
- 7'5 x 4'10 Study/Store
- 0.6 Miles To Horsham Station
- Two Double Bedrooms
- 11ft Kitchen
- Close To Town Centre
- First Floor Apartment
- Excellent Storage



Floor Plan

Total floor area 76.3 m² (821 sq.ft.) approx

This plan is for illustration purposes only and may not be representative of the property. Plan not to scale. Powered by PropertyBox