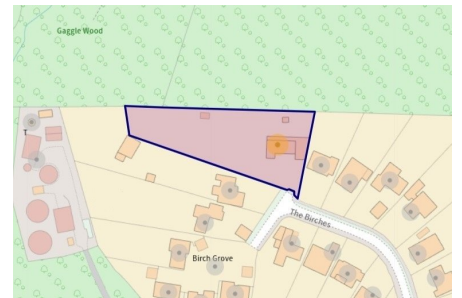


The Birches, Mannings Heat

Guide Price £750,000

3 1 2

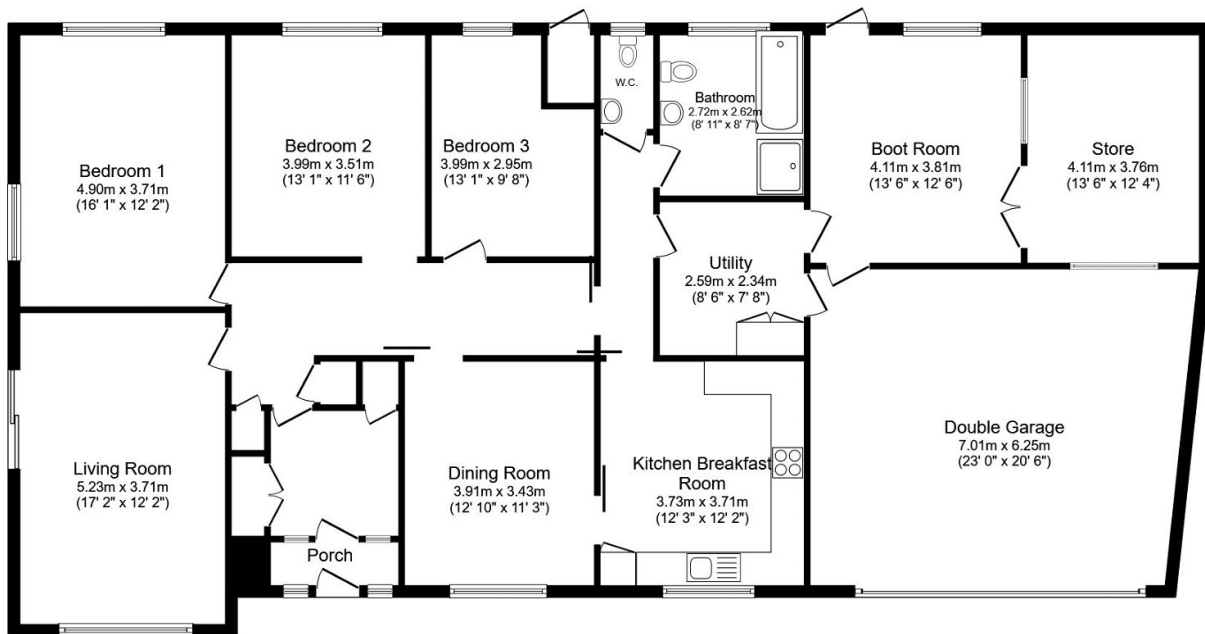


An exciting Opportunity to purchase a 2200 SqFt Detached Bungalow set on a private 0.69 Acre Plot at the end of a Small Cul De Sac in a popular Village Location, boasting Enormous Potential (stpp) and No Onward Chain.

Tenure: Freehold
Council Tax: F
EPC: Tbc

Key Features

- Private 0.69 Acre Plot
- Exciting Potential To Extend (stpp)
- No Onward Chain
- Views Over Neighbouring Woodland
- Gated Driveway Parking
- Over 2200 SqFt of Accommodation
- Cul De Sac Location
- Popular Village
- 23ft x 20ft Double Garage
- Flexible Layout



Floor Plan

Total floor area 211.7 sq.m. (2,279 sq.ft.) approx

This plan is for illustration purposes only and may not be representative of the property. Plan not to scale. Powered by PropertyBox