

Henderson Way, Horsham

Guide Price £475,000

🛏 4 🚗 2 🛋 3

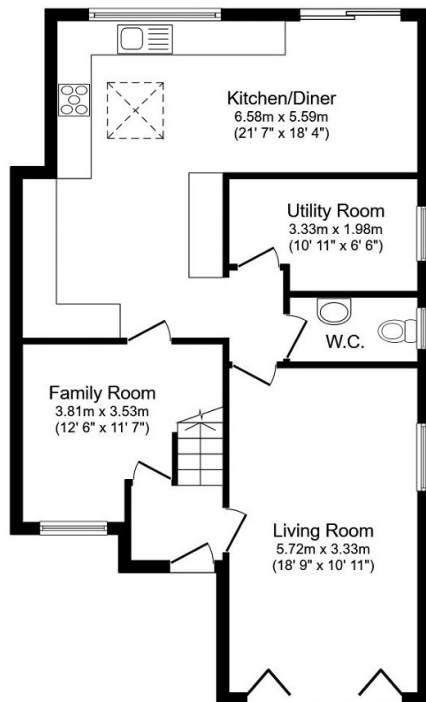


A greatly Extended Family Home tucked away at the end of a Small Cul De Sac boasting a 21ft Kitchen Diner, 18ft double aspect Living Room, separate Family Room and an En Suite to the Master Bedroom.

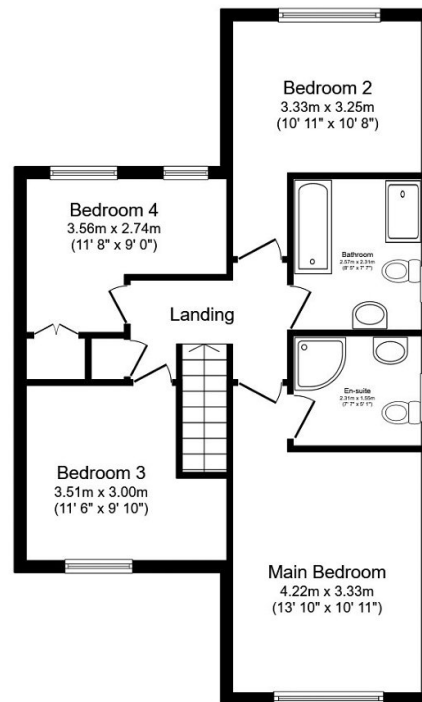
Tenure: Freehold
EPC: Tbc

Key Features

- Extended Family Home
- Four Generous Bedrooms
- 18ft Double Aspect Living Room
- Separate Family Room
- Two Private Gardens
- 21ft x 18ft Kitchen Diner
- En Suite To Master Bedroom
- Luxurious Family Bathroom
- Utility Room & WC
- Cul De Sac Location



Ground Floor



First Floor

Total floor area 134.5 m² (1,447 sq.ft.) approx

This plan is for illustration purposes only and may not be representative of the property. Plan not to scale. Powered by PropertyBox