

Gaggle Wood, Mannings Heath

Guide Price £390,000

🛏 3 🚿 1 🚗 3



An impressive Detached Bungalow on a generous Corner Plot, boasting Three Double Bedrooms, Three separate Reception Rooms and offering Enormous Potential to personalise, Extend & Develop (stpp).

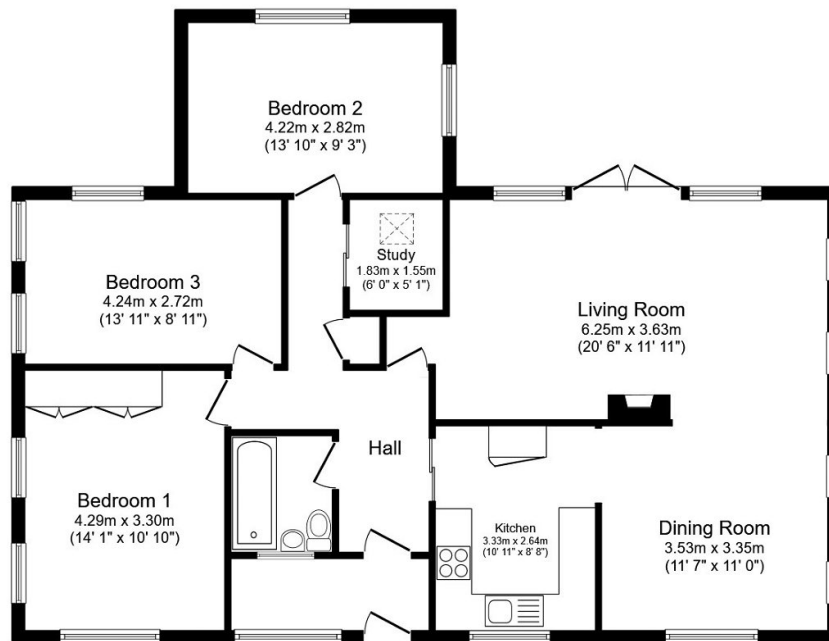
Tenure: Freehold

Council Tax: E

EPC: Current F - Potential C

Key Features

- Detached Timber Framed Bungalow
- Three Large Double Bedrooms
- Three Separate Reception Rooms
- Generous Corner Plot Garden
- Driveway & Detached Garage
- Potential To Develop/Extend (stpp)
- Popular Village Location
- Well Presented Throughout



Ground Floor

Total floor area 106.5 m² (1,147 sq.ft.) approx

This plan is for illustration purposes only and may not be representative of the property. Plan not to scale. Powered by PropertyBox