

## Gaggle Wood, Mannings Heath

Offers Over £400,000

3 1 3



An impressive Detached Bungalow on a generous Corner Plot, boasting Three Double Bedrooms, Three separate Reception Rooms and offering Enormous Potential to personalise, Extend & Develop (stpp).

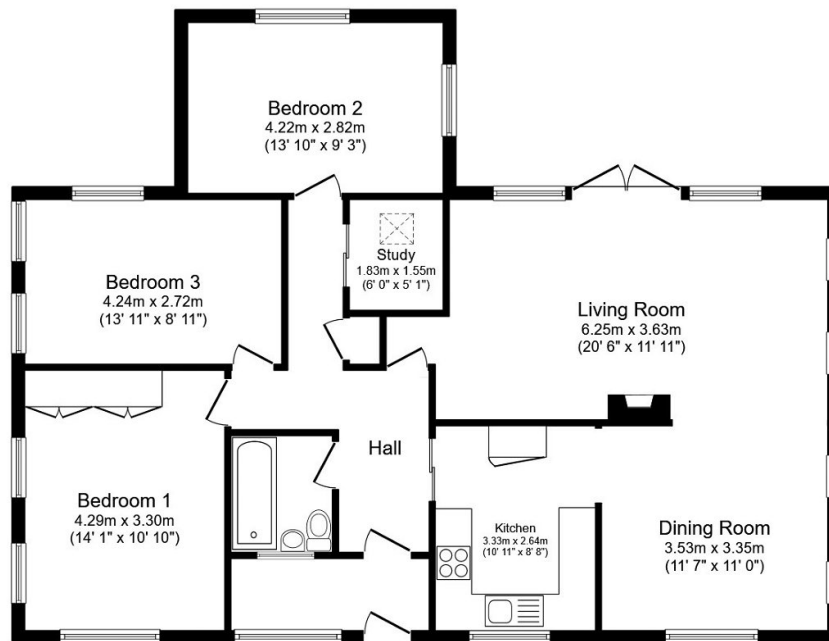
Tenure: Freehold

Council Tax: E

EPC: Current F - Potential C

## Key Features

- Detached Timber Framed Bungalow
- Bright and Airy Living Room
- Driveway & Detached Garage
- Popular Village Location
- Double Aspect Dining Room
- Three Large Double Bedrooms
- Generous Corner Plot Garden
- Potential To Develop/Extend (stpp)
- Well Presented Throughout
- Convenient Home Office Space



## Ground Floor

Total floor area 106.5 m<sup>2</sup> (1,147 sq.ft.) approx

This plan is for illustration purposes only and may not be representative of the property. Plan not to scale. Powered by PropertyBox