



Avebury Road, Chippenham

£240,000

3 1 1

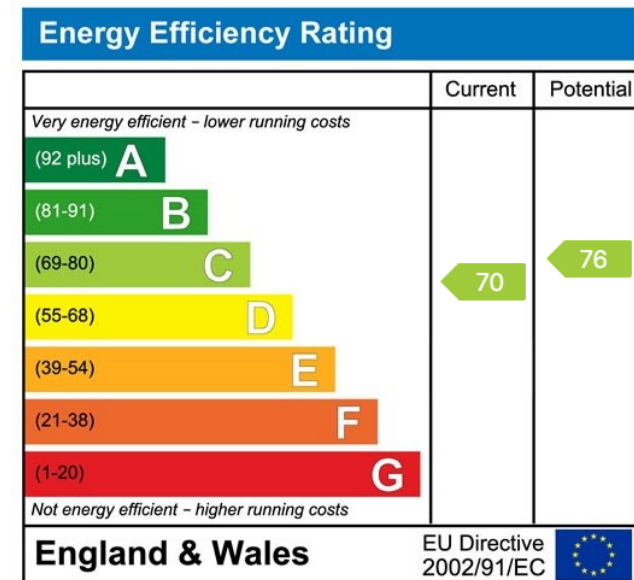
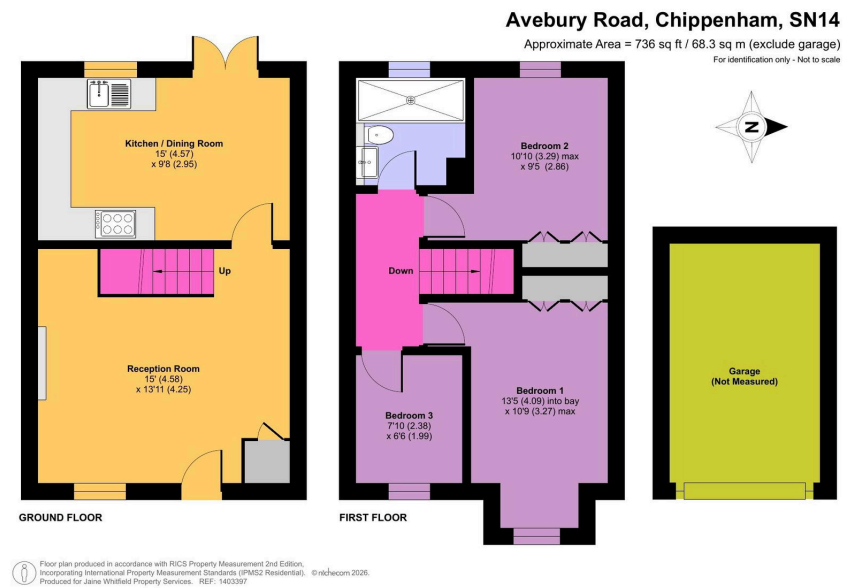
- Terraced 3 bedroom home in popular location
- Great sized kitchen/diner with range style cooker
- Non overlooked rear garden facing West
- NO ONWARDS CHAIN
- Local shops and amenities within walking distance
- Overlooking green space to the front
- Living room with lovely outlook over a small green
- Garage and parking to the rear
- approx. 1.5 miles to Chippenham town centre and rail station
- Easy walking distance to a local primary school (Queens crescent)



The perfect opportunity for someone to buy this terraced 3 bedroom home , complete with a garage, and pop their own stamp onto it. Good sized living accommodation and a decent kitchen/diner across the rear opening up onto a private garden plus a front garden overlooking open green space, makes this a really lovely opportunity for a First Time Buyer, someone looking to Downsize, or someone taking that next step up with a young family.

No onward chain so also the opportunity to potentially Exchange and Complete quickly.





01225 705650

hello@jainewhitfield.co.uk

www.jainewhitfield.co.uk

