



Purtpit, Atworth

£450,000

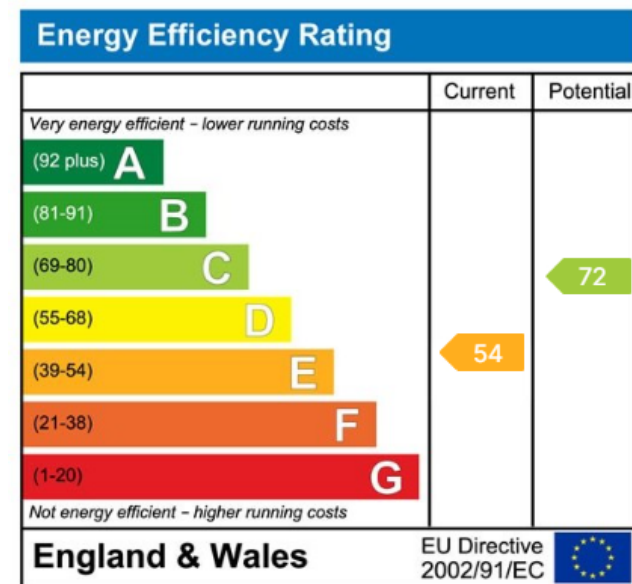
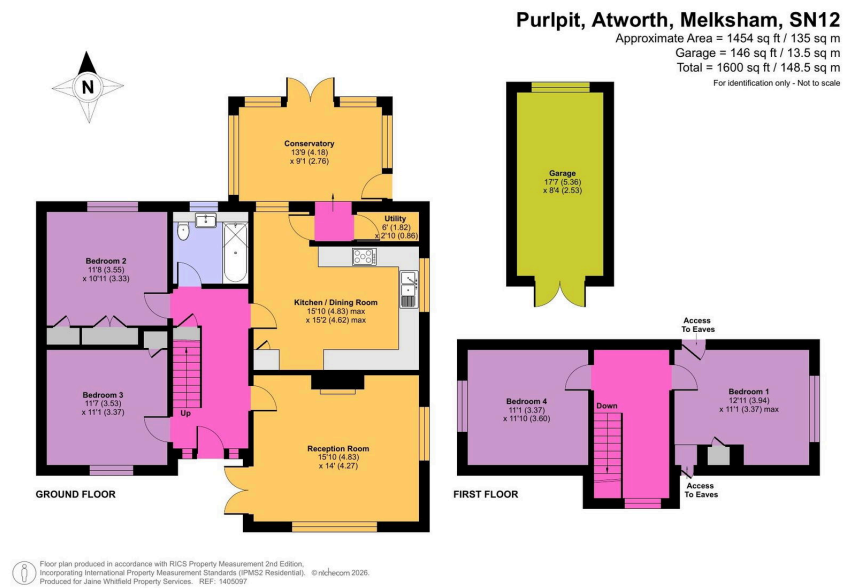
🛏 4 🍳 1 🚗 1

- Detached 4 double bedroom chalet style home (2 up and 2 down)
- Light filled property with so much potential to improve
- Kitchen/diner and laundry cupboard
- Garage and driveway parking for several cars
- Plenty of local amenities within walking distance
- STUNNING countryside views to the rear
- Living room with French doors and fireplace
- Spacious conservatory
- Popular village location close to Atworth and Whitley
- Flexible accommodation layout



Roll up your sleeves and get ready to create your forever family home! This is the first time this well loved home has ever been on the market as the family have been here since the 60's and now would love a new family to create their long term home here. A large 4 bedroom property, with long term flexible living and the most stunning countryside views to the rear! Some work to do, but a huge opportunity!





01225 705650

hello@jainewhitfield.co.uk

www.jainewhitfield.co.uk

