



Waverley Court, Bedlington, NE22 5JT

Offers Over £80,000

Harpers POWERED BY **exp** UK
property people

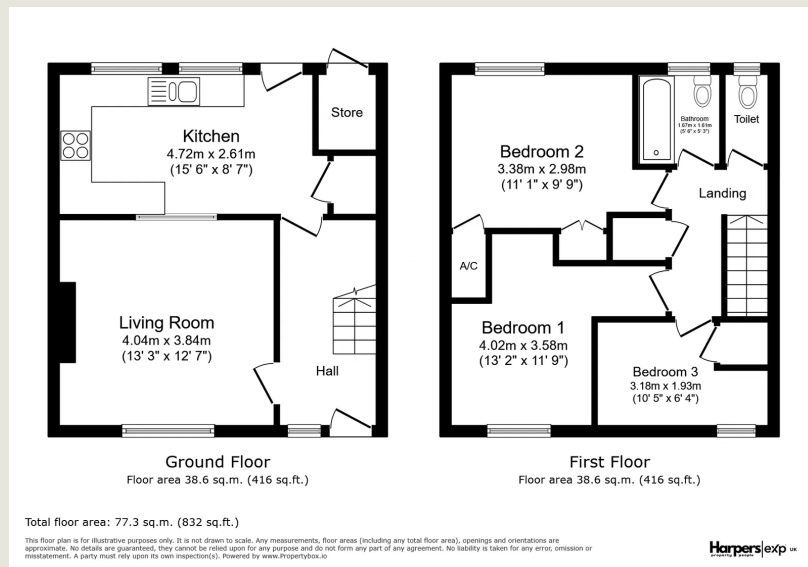
Bedrooms: 3 | Bathrooms: 1 | Receptions: 1

Tucked away in a quiet cul-de-sac, this well-proportioned three bedroom mid-terraced home offers excellent value and a practical layout, making it a great first home or investment opportunity. The accommodation includes a spacious front aspect living room, a good-sized fitted kitchen and the convenience of a first floor bathroom plus a second WC. To the rear, an enclosed yard provides low-maintenance outdoor space. Ideally positioned close to local amenities and upcoming rail links, the property offers great connectivity while retaining a peaceful residential setting. Offered for sale chain free, this is a straightforward purchase with strong appeal for buyers looking for convenience, space and potential.

- Mid-Terraced Family Home
- Three Bedrooms
- Good Sized Fitted Kitchen
- Spacious Front Aspect Living Room
- First Floor Bathroom & Second WC
- Enclosed Rear Yard
- Quiet Cul-De-Sac Location
- Close To Local Amenities & Upcoming Rail Links
- Offered Chain Free
- Ideal First Home or Investment







Harpers Property People

80 Windsor Gardens, Bedlington, NE22 5SY

07813 673 606

ali@harpersproperty.com

<https://harpersproperty.com>

Harpersexp UK
property people