



Ewart Drive, Bedlington, Northumberland, NE22 6FB

Offers Over £330,000

Harpers POWERED BY **exp** UK
property people

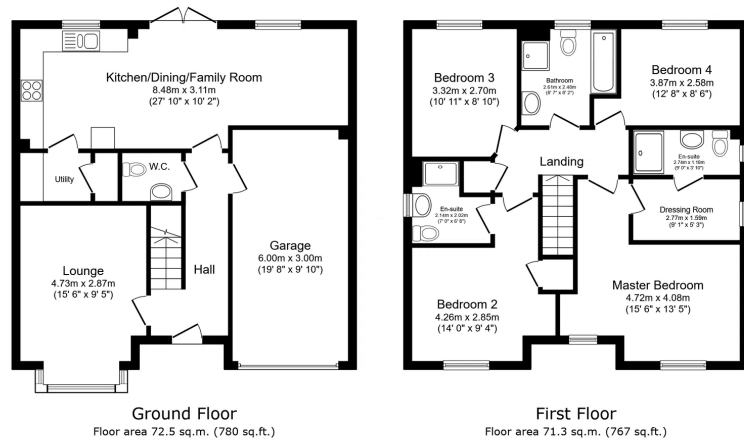
Bedrooms: 4 | Bathrooms: 3 | Receptions: 2

Set within one of the area's most desirable modern developments, this impressive four double bedroom detached family home delivers outstanding space, quality and energy efficiency, perfect for modern family living. The accommodation includes four generous double bedrooms, a luxurious four-piece family bathroom and the rarity of two en-suite shower rooms, providing comfort and convenience for the whole household. To the front, a spacious bay-fronted living room offers a bright and private retreat, while the heart of the home is the full-width open plan kitchen/dining/family room which makes an outstanding space for everyday living and entertaining alike. Further practical benefits include a downstairs WC and a separate utility room. Externally, the property boasts a South-facing rear garden, ideal for enjoying the sun, along with solar panels for improved energy efficiency. A double driveway and garage provide excellent parking and storage. Tastefully presented throughout and positioned in a highly sought-after residential location, this is a home that combines space, style, and sustainability in one exceptional package.

- Modern Detached Family Home
- Four Double Bedrooms
- 4-Piece Family Bathroom & Two Ensuites
- Bay-Fronted Living Room
- Full Width Kitchen/Dining/Family Room
- Downstairs WC & Utility Room
- South Facing Rear Garden
- Solar Panels







Total floor area: 143.7 sq.m. (1,547 sq.ft.)

This floor plan is for illustrative purposes only. It is not drawn to scale. Any measurements, floor areas (including any total floor area), openings and orientations are approximate. No details are guaranteed, they cannot be relied upon for any purpose and do not form any part of any agreement. No liability is taken for any error, omission or misstatement. A party must rely upon its own inspection(s). Powered by www.propertybox.io

Harpers exp UK



Harpers Property People

80 Windsor Gardens, Bedlington, NE22 5SY

07813 673 606

ali@harpersproperty.com

<https://harpersproperty.com>

Harpers | POWERED BY **exp** TM **UK**
property people