



Millfield Court, Bedlington, NE22 5EW

Offers Over £140,000

Harpers | POWERED BY **exp** UK
property people

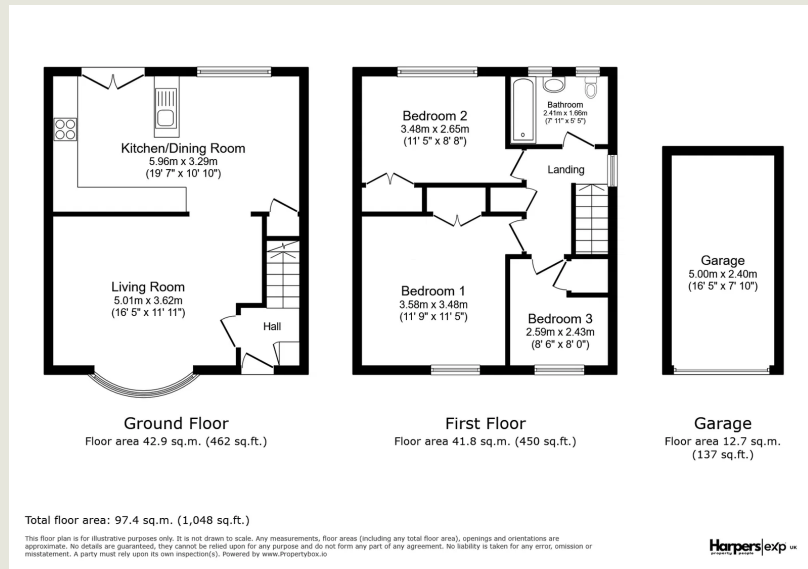
Bedrooms: 3 | Bathrooms: 1 | Receptions: 2

Ideally positioned within easy reach of Bedlington Front Street and its wide range of amenities, this attractive end of terrace family home offers generous living space, modern finishes and excellent convenience — making it an ideal first home or rental investment. The accommodation includes three well-proportioned bedrooms and a modern first floor family bathroom. On the ground floor, a great-sized bay-fronted living room provides a bright and welcoming space, while the generous full-width kitchen/diner to the rear is perfect for everyday family life and entertaining. Externally, the property benefits from an enclosed West-facing courtyard garden, ideal for enjoying afternoon and evening sun, along with a single garage en-bloc providing valuable parking or storage. Presented in great decorative order throughout and set in a highly convenient location, this is a move-in-ready home offering both comfort and practicality.

- End Of Terrace Family Home
- Three Well Proportioned Bedrooms
- Modern First Floor Bathroom
- Great Sized Bay Fronted Living Room
- Generous Full Width Kitchen/Diner
- Single Garage En-Bloc
- Enclosed West Facing Courtyard Garden
- Great Decorative Order Throughout
- Located Close To Bedlington Front Street Amenities
- Ideal First Home Or Rental Investment







Harpers Property People

80 Windsor Gardens, Bedlington, NE22 5SY

07813 673 606

ali@harpersproperty.com

<https://harpersproperty.com>

Harpers | POWERED BY **exp** TM **UK**
property people