



Durham Close, Bedlington, NE22 6NB

Offers Over **£160,000**

Harpers POWERED BY **exp** UK
property people

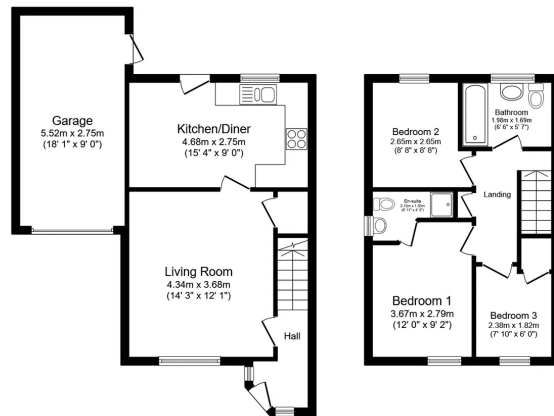
Bedrooms: 3 | Bathrooms: 2 | Receptions: 1

Set within a highly regarded residential postcode, this attractive three bedroom semi-detached home is well presented from top to bottom and offers modern, well-balanced accommodation ideal for families, professionals or downsizers alike. The property features a spacious front aspect living room, a full-width kitchen/diner perfect for everyday living and entertaining as well as the added benefit of a family bathroom plus an ensuite shower room to the principal bedroom. Externally, the home continues to impress with a good-sized West-facing garden, ideal for enjoying afternoon and evening sun, along with a double driveway and single garage providing excellent off-street parking and storage. Conveniently located within easy reach of local amenities and transport links, this is a move-in-ready home that combines comfort, style and practicality in one desirable package.

- Semi-Detached Home
- Three Bedrooms
- Family Bathroom & Ensuite Shower Room
- Spacious Front Aspect Living Room
- Full Width Kitchen/Diner
- Good-Sized West Facing Garden
- Double Driveway & Single Garage
- Great Residential Postcode
- Well Presented From Top Top Bottom
- Within Reach Of Several Local Amenities & Transport Links







Total floor area: 84.6 sq.m. (911 sq.ft.)

This floor plan is for illustrative purposes only. It is not drawn to scale. Any measurements, floor areas (including any total floor area), openings and orientations are approximate. No details are guaranteed, they cannot be relied upon for any purpose and do not form any part of any agreement. No liability is taken for any error, omission or misstatement. A party must rely upon its own inspection(s). Powered by www.propertybox.co

Harpersexp UK



Harpers Property People

80 Windsor Gardens, Bedlington, NE22 5SY

07813 673 606

ali@harpersproperty.com

<https://harpersproperty.com>

Harpersexp POWERED BY **property people** UK