



Eden Court, Bedlington, NE22 5DG

Offers Over £80,000

Harpers POWERED BY **exp** UK
property people

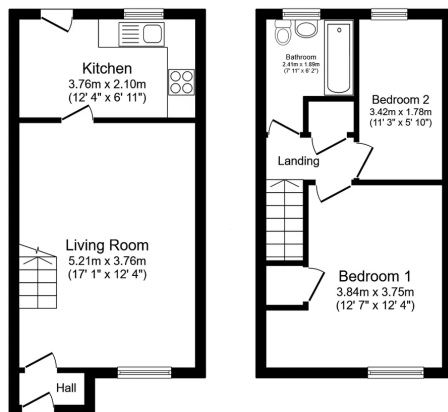
Bedrooms: 2 | Bathrooms: 1 | Receptions: 1

Perfectly positioned for local shops, schools and transport links, this two bedroom mid-terrace home is an excellent opportunity for first-time buyers or those seeking a reliable rental investment. The property features a spacious front aspect living room, a kitchen to the rear as well as an enclosed courtyard garden with gated rear access: ideal for private outdoor space with minimal upkeep. To the front, this ideal start home benefits from its own driveway, ensuring convenient off-street parking. Offered with vacant possession and no onward chain, the property is well-presented throughout and ready for immediate occupation. With its convenient location close to local amenities and straightforward, move-in-ready appeal, this is an introduction to the market not to be missed.

- Mid-Terrace Home
- Two Bedrooms
- Spacious Front Aspect Living Room
- Kitchen To Rear
- Enclosed Courtyard Garden With Gated Access
- Own Driveway To The Front
- Vacant Possession With No Onward Chain
- Ideal First Home or Rental Investment
- Well Presented Throughout
- Convenient Location For Amenities







Total floor area: 56.8 sq.m. (612 sq.ft.)

This floor plan is for illustrative purposes only. It is not drawn to scale. Any measurements, floor area (including any total floor area), openings and orientations are approximate. No details are guaranteed, they cannot be relied upon for any purpose and do not form any part of any agreement. No liability is taken for any error, omission or misstatement. A party must rely upon its own inspection(s). Powered by www.propertybox.co

Harpers|exp



Harpers Property People

80 Windsor Gardens, Bedlington, NE22 5SY

07813 673 606

ali@harpersproperty.com

<https://harpersproperty.com>

Harpers POWERED BY **exp** TM **UK**
property people