



12 Hartford Court

Offers Over £260,000

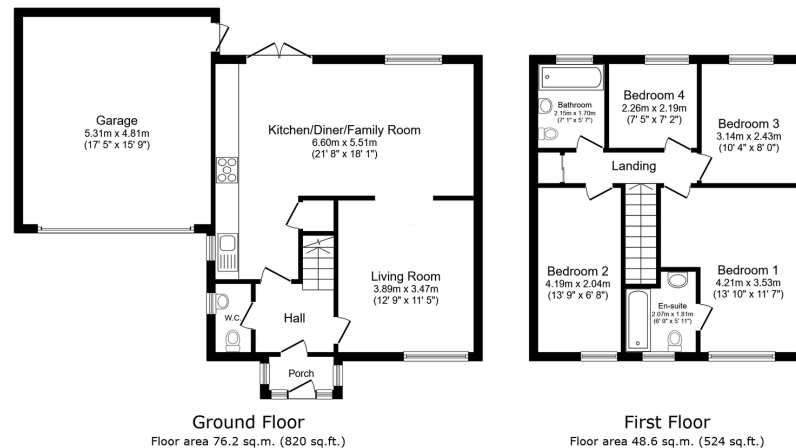
🛏 4 🍳 2 🛋 2



- Detached Family Home
- Four Bedrooms
- Two Bathrooms & Ground Floor WC
- Front Aspect Living Room
- Large Open Plan Kitchen/Dining/Family Room
- Double Garage & Driveway
- Good Sized Enclosed Rear Garden
- Desirable Residential Development
- Great Decorative Order Throughout
- Close To Several Local Amenities & Schools



Nestled comfortably within one of the town's most sought after streets, we are delighted to introduce this detached family home to you - a fantastic amount of space on offer for the price tag, including four good-sized bedrooms supported by two fully restored modern 3-piece bathrooms across the first floor. The downstairs accommodation is fully loaded with a separate WC off the entrance hall, a spacious front aspect living room, as well as a substantial open plan kitchen/dining/family room beyond that leads nicely into the wide enclosed rear garden with gated side access. To the front this property further benefits from a double garage and driveway, making this a real box ticker for those motivated buyers in the market. If location location location is on your wish list, look no further.



This floor plan is for illustrative purposes only. It is not drawn to scale. Any measurements, floor areas (including any total floor area), openings and orientations are approximate. No details are guaranteed, they cannot be relied upon for any purpose and do not form any part of any agreement. No liability is taken for any error, omission or misstatement. A party must rely upon its own inspection(s). Powered by www.propertybox.co.uk

Harpers|exp UK
PROPERTY & MORE



eXp World UK Ltd is a registered company at Level 37, 25 Canada Square, London, E14 5LQ.

Registered company number is 12016573. VAT Registration Number is 327 4120 29