



Cotswold Drive, Ashington. NE63 0HR

Offers In Region Of £300,000

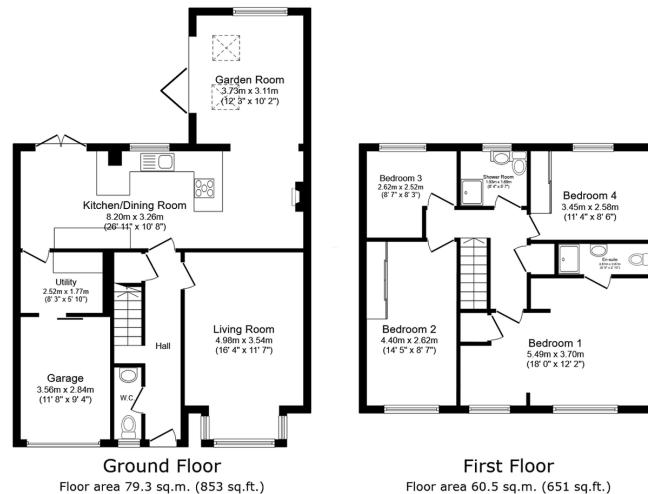
🛏 4 🍳 2 🛋 2



- Family Detached Home.
- Extended Large Master Bedroom With En Suite.
- Front Aspect Lounge.
- Downstairs WC.
- Parking For Upto Four Cars.
- Four Generous Size Bedrooms.
- Stunning Open Plan Kitchen/ Diner Family Room.
- Utility Room.
- Integral Single Garage.
- Well Maintained Gardens.



Spacious Four Bedroom Detached Home - with Open-Plan Living and Generous Outdoor Space On The Popular Wansbeck Manor Estate. This beautifully presented four-bedroom detached home offers generous living space, ideal for modern family life. At the heart of the home is a stunning open-plan kitchen, diner, and snug/lounge area, perfect for entertaining or relaxing with family, and located at the rear of the property with views over the garden. A separate front-aspect lounge provides additional living space. Upstairs, the large master bedroom benefits from a stylish en suite shower room, while three further well-proportioned bedrooms and a contemporary family shower room complete the first floor. Further features include a convenient downstairs WC, a separate utility room, and internal access to the single garage. Externally, the property boasts parking for up to four vehicles and a well-maintained rear garden, ideal for outdoor dining and relaxation.



Total floor area: 139.8 sq.m. (1,505 sq.ft.)

This floor plan is for illustrative purposes only. It is not drawn to scale. Any measurements, floor areas (including any total floor area), openings and orientations are approximate. No details are guaranteed, they cannot be relied upon for any purpose and do not form any part of any agreement. No liability is taken for any error, omission or misstatement. A party must rely upon its own inspection(s). Powered by www.Propertybox.io

Down
Harpers exp

eXp World UK Ltd is a registered company at Level 37, 25 Canada Square, London, E14 5LQ.

Registered company number is 12016573. VAT Registration Number is 327 4120 29