





## Whittingham Close, Ashington, NE63 8XX

Offers Over £280,000

🛏 4 🍳 2 🚗 2

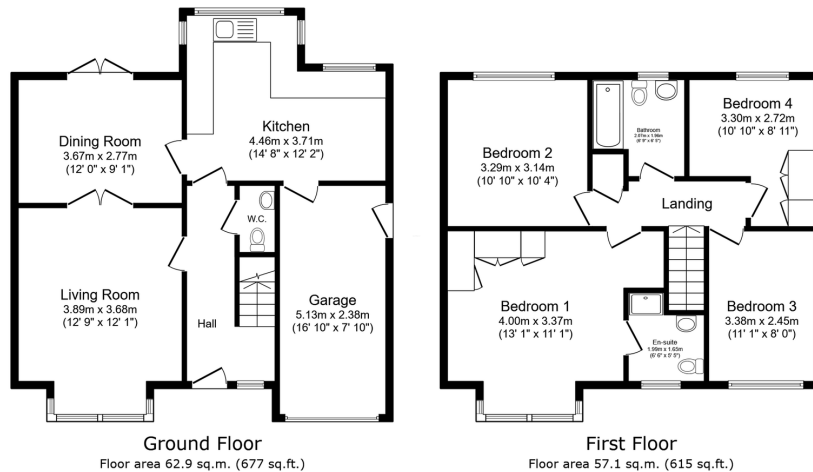


- Family Detached Home.
- Master Bedroom With En Suite.
- Open Plan Lounge/Diner.
- Down Stairs WC.
- Double Driveway.
- Four Spacious Bedrooms.
- Front Aspect Lounge.
- Good Size Kitchen.
- Integral Single Garage.
- No Upper Chain.





**An Impressive four bedroom detached family home** - On the popular Well Head Dene Estate, Ashington, With A West Facing Garden Backing Onto Open Fields. Spacious Detached Four Bedroom Family Home. This beautifully presented detached family home offers generous living space throughout. Boasting four bedrooms, including a master with en-suite, and a well-appointed family bathroom, it's ideal for modern family living. On the ground floor, you'll find an inviting open-plan lounge and dining area, perfect for entertaining or relaxing. A separate modern kitchen provides ample storage and workspace, and there's the added convenience of a downstairs WC. Externally, the property features a single garage with internal access and a double driveway offering ample parking. To the rear, enjoy a good-sized garden that backs onto open fields, offering both privacy and picturesque views.



Total floor area: 120.0 sq.m. (1,292 sq.ft.)

This floor plan is for illustrative purposes only. It is not drawn to scale. Any measurements, floor areas (including any total floor area), openings and orientations are approximate. No details are guaranteed, they cannot be relied upon for any purpose and do not form any part of any agreement. No liability is taken for any error, omission or misstatement. A party must rely upon its own inspection(s). Powered by [www.Propertybox.co.uk](http://www.Propertybox.co.uk)

**Down**  
**Harpers** **eXp**

eXp World UK Ltd is a registered company at Level 37, 25 Canada Square, London, E14 5LQ.

Registered company number is 12016573. VAT Registration Number is 327 4120 29