





## Mill Court, Ellington. NE61 5PH

Offers Over £350,000

🛏 3 🚿 3 🛋 2



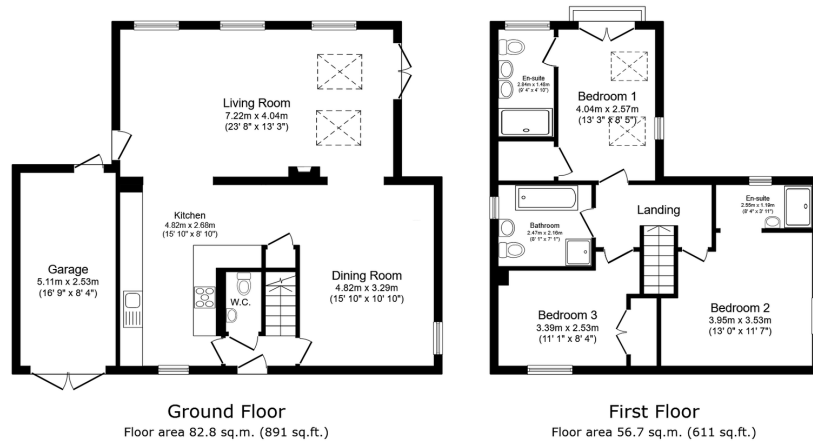
- Stone Built Terrace Home.
- Three Good Size Bedrooms.
- Two En Suites & A Family Bathroom.
- Open Plan Ground Floor Space.
- Large Extension Living Area.
- Log Burner.
- Spacious Dining Area.
- Well Equipped Modern Kitchen.
- Private Garden With Fantastic Views.
- No Upper Chain.





## Rare Opportunity, Stunning 3 Bedroom, 3 Bathroom Stone Build Terrace Home - In A Sought After Village Location.

We welcome to the market this beautiful presented stone built terrace home, offering an exceptional blend of character, space & style. Boasting three good size bedrooms, two with en suite, and a family bathroom completes the first floor accommodation. On the ground floor, to the front of the property, is a large dining area and a modern kitchen with fitted appliances. This rare find features a large extension family room at the rear of the property creating a bright and inviting open plan layout, with high ceilings and an abundance of light, step outside to a well maintained garden, a true highlight offering fantastic views. This home is ideal for those seeking a stylish and spacious home in a sought after location.



Total floor area: 139.5 sq.m. (1,501 sq.ft.)

This floor plan is for illustrative purposes only. It is not drawn to scale. Any measurements, floor areas (including any total floor area), openings and orientations are approximate. No details are guaranteed, they cannot be relied upon for any purpose and do not form any part of any agreement. No liability is taken for any error, omission or misstatement. A party must rely upon its own inspection(s). Powered by www.Property24.co.uk

**Down**  
**Harpers**exp

eXp World UK Ltd is a registered company at Level 37, 25 Canada Square, London, E14 5LQ.

Registered company number is 12016573. VAT Registration Number is 327 4120 29