



Fallowfield Way, Ashington, NE63 8LD

Offers In Region Of £200,000

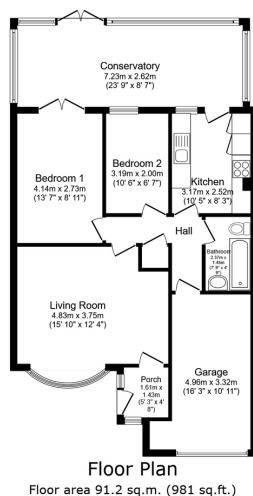
🛏 2 🚿 1 🛋 2



- Semi Detached Bungalow.
- Good Size Front Aspect Lounge.
- Newley Fitted Modern Kitchen.
- Low Maintenance Rear Garden.
- Single Garage.
- Two Bedrooms.
- Full Width Large Conservatory.
- Three Piece Bathroom.
- Double Driveway.
- No Upper Chain.



A Charming spacious two bedroom, two reception room semi detached bungalow - within the desirable Fallowfield Estate of Ashington. Charming 2-Bedroom Semi-Detached Bungalow nestled in the popular Fallowfield estate, this well-presented semi-detached bungalow offers comfortable and spacious living, ideal for a variety of buyers. The property features a welcoming front porch entrance, leading into a generous front-aspect lounge that provides a bright and airy living space. The newly fitted kitchen comes complete with modern appliances, offering both style and functionality. There are two well-proportioned bedrooms and a modern three-piece bathroom suite. A standout feature is the large, full-width conservatory at the rear. The rear garden is low-maintenance, while the front of the property benefits from a double driveway and a single garage, providing ample off-street parking. Early viewing is highly recommended, offered with no upper chain.



Total floor area: 91.2 sq.m. (981 sq.ft.)

This floor plan is for illustrative purposes only. It is not drawn to scale. Any measurements, floor areas (including any total floor area), openings and orientations are approximate. No details are guaranteed, they cannot be relied upon for any purpose and do not form part of any agreement. No liability is taken for any error, omission or misstatement. A party must rely upon its own inspection(s). Powered by www.Propertybox.io

Down e
Harpersexp

eXp World UK Ltd is a registered company at Level 37, 25 Canada Square, London, E14 5LQ.

Registered company number is 12016573. VAT Registration Number is 327 4120 29