



2 Barrington Park

Offers Over £200,000

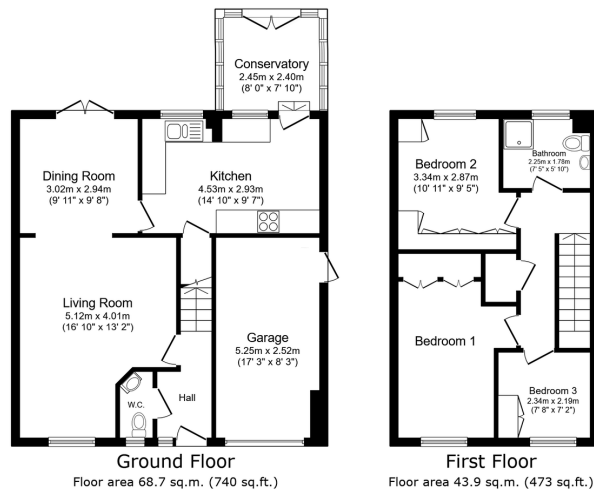
🛏 3 🚿 1 🚺 3



- Detached Home
- Three Bedrooms
- Modern Shower Room & Downstairs WC
- Spacious Living Room
- Separate Dining Area
- Good-Sized Kitchen
- Conservatory
- Landscaped Garden & Decked Patio
- Garage & Driveway
- Close To Cambois Beach



A fantastic detached family home located within a peaceful cul-de-sac on the fringes of Bedlington that puts you within comfortable reach of the stunning Northumberland coastline & Cambois Beach. The internal accommodation on offer is pretty impressive with three well-proportioned bedrooms, all of which have built-in wardrobe storage and are supported by a newly fitted modern shower room at first floor level. Heading downstairs, the reception space is brilliant for entertaining, with a spacious front aspect living room, a separate dining area (that grants direct garden access) as well as a conservatory beyond the good-sized kitchen that also leads to the garden. Now, the garden included with this property is a real bonus, facing West with decked & paved patio areas, it'll be hard to resist when the sun does shine. Completing the list of this property's highlights is a ground floor WC off the entrance lobby, a single attached garage and a driveway to the front.



Total floor area: 112.7 sq.m. (1,213 sq.ft.)

This floor plan is for illustrative purposes only. It is not drawn to scale. Any measurements, floor areas (including any total floor area), openings and orientations are approximate. No details are guaranteed, they cannot be relied upon for any purpose and do not form any part of any agreement. No liability is taken for any error, omission or misstatement. A party must rely upon its own inspection(s). Powered by www.propertybox.io

Harpersexp UK



eXp World UK Ltd is a registered company at Level 37, 25 Canada Square, London, E14 5LQ.

Registered company number is 12016573. VAT Registration Number is 327 4120 29