





## Turnberry Mews, Ashington.

Offers Over £220,000

🛏 4 🍳 2 🛋 2

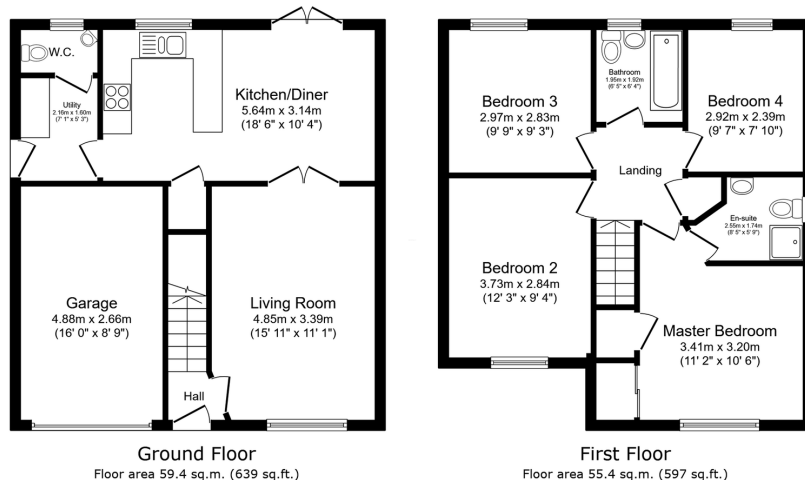


- Spacious Detached Home.
- Full Width Kitchen/Diner.
- Utility Room.
- Four Good Size Bedrooms.
- Single Garage & Double Driveway.
- Good Size Front Aspect Lounge.
- French Doors Onto South Facing Garden.
- Downstairs WC
- Master Bedroom With En Suite
- Cul De Sac Location.





**A Well Presented Modern Four Bedroom Family Detached Home** - Nestled In A Small Cul De Sac, Close To Local Amenities & Costal Route. Beautiful 4-Bedroom Detached Family Home in Quiet Cul-de-Sac. This home offers spacious and modern living, perfect for growing families. The property features a welcoming front-aspect lounge and a full-length kitchen/diner with French doors opening onto a south-facing garden—ideal for entertaining and enjoying the sun. A utility room and downstairs WC add to the practicality of this well-designed home. Upstairs, you'll find four generously sized bedrooms, including a master with its own en suite shower room and the three piece family bathroom. Externally, the home benefits from a single garage and a double driveway, providing ample parking. The enclosed rear garden is perfect for children, pets, or simply relaxing in the sunshine. This is a fantastic opportunity to acquire a spacious and well-located family home



This floor plan is for illustrative purposes only. It is not drawn to scale. Any measurements, floor areas (including any total floor area), openings and orientations are approximate. No details are guaranteed, they cannot be relied upon for any purpose and do not form any part of any agreement. No liability is taken for any error, omission or misstatement. A party must rely upon its own inspection(s). Powered by [www.Propertybox.co.uk](http://www.Propertybox.co.uk)

**Down**  
**Harpers** **eXp**

eXp World UK Ltd is a registered company at Level 37, 25 Canada Square, London, E14 5LQ.

Registered company number is 12016573. VAT Registration Number is 327 4120 29