



Nursery Park, Ashington, NE63 0DH

Offers Over £220,000

🛏 3 🚿 2 🛋 2

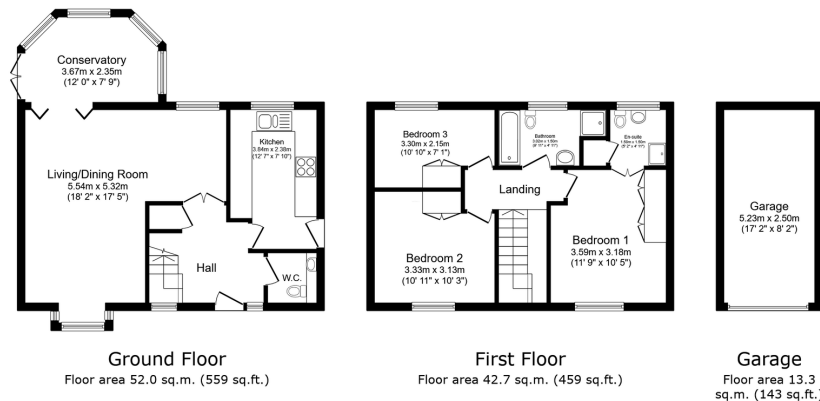


- Detached Home.
- Three Good Size Bedrooms.
- Spacious Open Plan Lounge/ Diner.
- Good size Kitchen.
- Conservatory.
- Downstairs WC.
- Four Piece Family Bathroom.
- South Facing Garden.
- Single Garage & Driveway.
- Solar Panels Amazing Energy Saving Costs.



Spacious **Three Bedroom Detached Home**, On The Popular Nursery Park Estate, With Views Over the River.

This well presented 3 bedroom detached home offers generous living space, on the ground floor is the kitchen, and a bright and spacious open plan lounge/diner with added space of a conservatory to the rear of the property, on the first floor there are 3 good size bedrooms, and a four piece family bathroom. This home also has a downstairs WC. Externally is the detached garage, driveway and electric charge point, along with well maintained south facing gardens with fantastic views over the river. The home also has the added bonus of solar panels saving quite a lot of money on your energy bills. Located in a desirable area, this home combines comfort, space and a touch of nature, a must view home.



Total floor area: 107.9 sq.m. (1,162 sq.ft.)

This floor plan is for illustrative purposes only. It is not drawn to scale. Any measurements, floor areas (including any total floor area), openings and orientations are approximate. No details are guaranteed, they cannot be relied upon for any purpose and do not form any part of any agreement. No liability is taken for any error, omission or misstatement. A party must rely upon its own inspection(s). Powered by www.propertybox.co

Dawson
Harpersexp

eXp World UK Ltd is a registered company at Level 37, 25 Canada Square, London, E14 5LQ.

Registered company number is 12016573. VAT Registration Number is 327 4120 29