



George Fitzroy Court, Morpeth, Northumberland

Offers Over £160,000

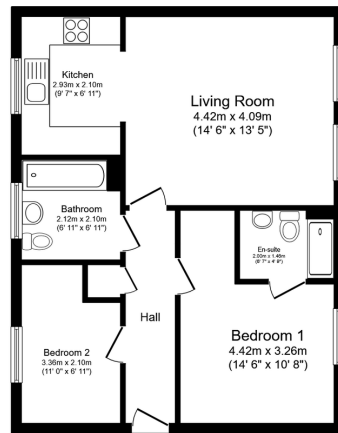
🛏️ 2 🚿 2 🛋️ 1



- First Floor Modern Apartment • Two Double Bedrooms With Long Lease
- Three-Piece Bathroom & Ensuite Shower Room
- Modern Kitchen With Integrated Appliances
- Beautifully Presented Property With Neutral Decor
- Surrounded By Mature Landscaped Gardens & Open Green Space
- Fantastic Living Space Flooded With Natural Light
- High Ceilings With A Great Sense Of Space Throughout
- Allocated Parking Bay (By The Front Door)
- Peaceful Residential Location



Located within one of the area's most desirable residential developments, this attractive first floor apartment is presented to the market in flawless decorative order throughout. Surrounded by mature landscaped gardens and open green space, this light & airy two double bedroom apartment feels spacious from the front door in thanks to the marvellous high ceilings and the abundance of natural light pouring in from all angles. Both bedrooms are accompanied by a modern three-piece family bathroom as well as an ensuite shower off the master. The impressive living space within this property is an incredibly inviting space that opens to the modern kitchen that includes integrated appliances. As well as an allocated parking spot right by the main entrance to the block (rare in developments of this nature), this beautiful property also boasts an unexpired lease in excess of 980 years. Get in touch today if this apartment has grabbed your attention.



Floor Plan
Floor area 57.0 m² (613 sq.ft.)

TOTAL: 57.0 m² (613 sq.ft.)

This floor plan is for illustrative purposes only. It is not drawn to scale. Any measurements, floor areas (including any total floor area), openings and orientations are approximate. No details are guaranteed, they cannot be relied upon for any purpose and do not form any part of any agreement. No liability is taken for any error, omission or misstatement. A party must rely upon its own inspection(s). Powered by www.propertybox.co

Harpers|exp UK
PROPERTY EXPERTS



eXp World UK Ltd is a registered company at Level 37, 25 Canada Square, London, E14 5LQ.

Registered company number is 12016573. VAT Registration Number is 327 4120 29