



## 18 Woodside

Offers Over £325,000

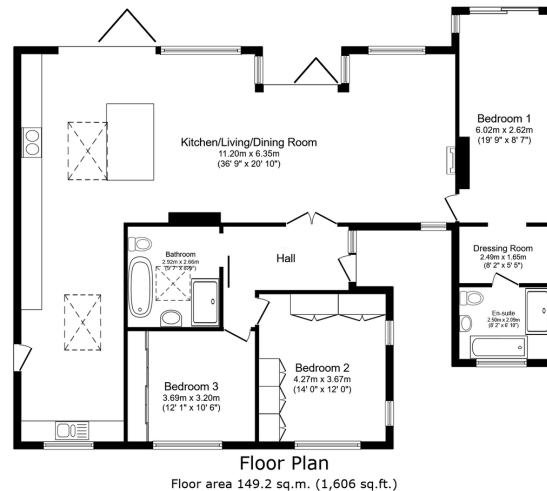
🛏 3 🚿 2 🛋 2



- Detached Bungalow
- Three Double Bedrooms
- Ensuite Shower Room & Dressing Room
- Impressive 4-Piece Family Bathroom
- Amazing Open Plan Living With Southerly Aspect
- Wonderful Sized Garden & Terrace Facing South With Summer House
- A Well Appointed Kitchen With Integrated Appliance & Separate Utility Area
- Double Driveway
- Beautifully Presented Throughout
- Measuring Over 1600sqft Internally



Located on a local road renowned for its impressive gardens to the South side, we introduce this incredible three double bedroom, two bathroom detached bungalow to the market. Measuring over 1600sqft internally, the open plan living/dining/ kitchen space (that includes a log burner and a number of integrated appliances) is simply breathtaking with double bi-fold door access on to the generous terrace & rear garden to the South. Very well presented throughout, bedrooms two and three have built-in wardrobes whilst bedroom one benefits from a separate dressing room. The property itself has a charm & warmth to it that you are bound to experience once viewing and to the front, this inviting home also has the added bonus of two off street parking bays on either side. Get in touch today if this looks like your next home.



Total floor area: 149.2 sq.m. (1,606 sq.ft.)

This floor plan is for illustrative purposes only. It is not drawn to scale. Any measurements, floor areas (including any total floor area), openings and orientations are approximate. No details are guaranteed, they cannot be relied upon for any purpose and do not form part of any agreement. No liability is taken for any error, omission or misstatement. A party must rely upon its own inspection(s). Powered by [www.propertybox.io](http://www.propertybox.io)

**Harpers|exp**  
PROPERTY & FINANCE



eXp World UK Ltd is a registered company at Level 37, 25 Canada Square, London, E14 5LQ.

Registered company number is 12016573. VAT Registration Number is 327 4120 29