



Simpson Court, North Seaton, Ashington, NE63 9SD

Offers In Region Of £230,000

🛏 3 🍳 2 🛋 2

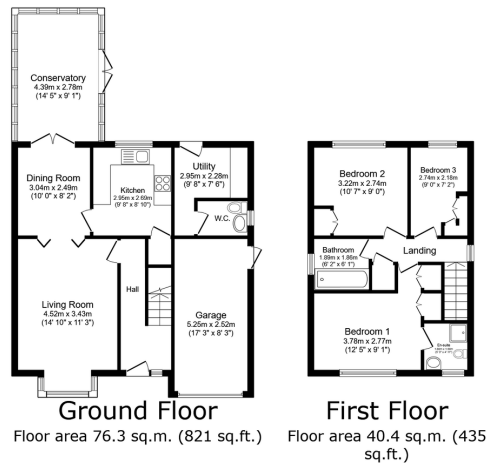


- Detached Property.
- Master With En Suite.
- Downstairs WC.
- Large Conservatory.
- Single Garage & Double Driveway.
- Three Good Sized Bedrooms.
- Kitchen with integrated appliances & Utility Room.
- Open Plan Lounge/Diner.
- Well Maintained Gardens.
- Cul De Sac Location.



Three Bedroom Detached Home - Cul De Sac Location, Ashington.

Nestled comfortably within a residential cul-de-sac. This attractive three bedroom detached house is in a beautiful quiet estate. There are three bedrooms on the first floor which are complimented by a modern three-piece family bathroom & an en suite shower room off the master bedroom. The living space across the ground floor is open plan lounge/diner, giving access to the good size conservatory, the kitchen is at the rear of the property & gives outlook to the private garden space, this property also boasts a utility room and downstairs WC. As you would expect with most detached homes there is a garage & double driveway to the front of the property with a well maintained good size garden. As far as three bedroom properties go this one ticks all the boxes.



TOTAL: 116.7 sq.m. (1,256 sq.ft.)

This floor plan is for illustrative purposes only. It is not drawn to scale. Any measurements, floor areas (including any total floor area), openings and orientations are approximate. No details are guaranteed, they cannot be relied upon for any purpose and do not form any part of any agreement. No liability is taken for any error, omission or misstatement. A party must rely upon its own inspection(s). Powered by www.Propertybox.io

Down e
Harpers exp UK



eXp World UK Ltd is a registered company at Level 37, 25 Canada Square, London, E14 5LQ.

Registered company number is 12016573. VAT Registration Number is 327 4120 29