



Laurel Drive, Fallowfield Estate, Ashington, NE63 9FF

Offers In Region Of £300,000

🛏 4 🍳 2 🛋 3

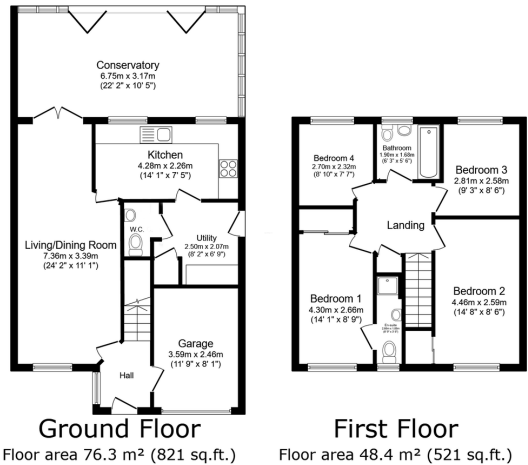


- Detached Family Home.
- Master Bedroom With En - Suite.
- Modern Kitchen.
- Full Width Conservatory/Sun Room Extension.
- Driveway & Garage With Electric Charge Point.
- Four Good Size Bedrooms.
- Open Plan Lounge/Diner.
- Utility Room & Downstairs WC.
- Rear Garden, Backing Onto Green Open Space.
- Popular Fallowfield Estate.



An Impressive four bedroom detached family home - On The Popular Fallowfield Estate, Ashington.

Impressive 4 bedroom family home, This well presented detached property on the popular Fallowfield Estate, offers future buyers , 4 bedrooms, master with en-suite, and a three piece family bathroom completes the first floor accommodation. At ground floor level, from the front entrance hall there is an open plan living/dining area which leads into a fantastic conservatory extension which is the whole width of the home, with out looks onto the rear garden, and open green space beyond. The kitchen area is at the rear of the property, where you will also find a utility room and downstairs WC. Externally there is a single garage with electric charge point, and driveway. This is a must view family home that's sure to tick all the boxes.



TOTAL: 124.6 m² (1,342 sq.ft.)

This floor plan is for illustrative purposes only. It is not drawn to scale. Any measurements, floor areas (including any total floor area), openings and orientations are approximate. No details are guaranteed, they cannot be relied upon for any purpose and do not form any part of any agreement. No liability is taken for any error, omission or misstatement. A party must rely upon its own inspection(s). Powered by [www.propertybox.io](#)

