



33 Humford Way

Offers Over £375,000

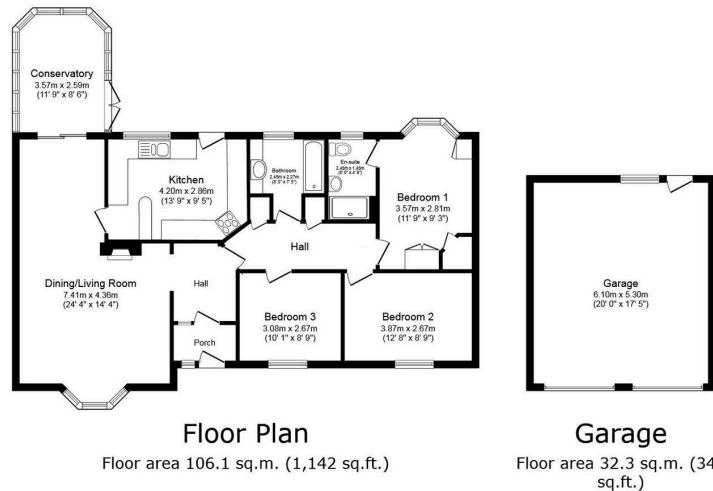
🛏 3 🚿 2 🛋 3



- Double Fronted Detached Bungalow
- Modern Family Bathroom & Ensuite Shower Room
- Good-Sized Eat-In Kitchen
- Detached Double Garage With Plumbing & Power
- Impressive Plot Within Peaceful Cul-De-Sac
- Three Double Bedrooms
- Substantial Split Level L-Shaped Living/Dining Space
- Conservatory To The Rear
- Generous Rear Garden & Patio
- No Onward Chain



Located within a quiet cul-de-sac on the sought after Bayard Woods estate, this detached executive bungalow is being sold with no onward chain. Internally, expect to be impressed with the proportions on offer, with three double bedrooms, a modern family bathroom along with a modern en-suite shower room off master-bedroom one. The reception area at the heart of this home is an impressive space that is L-shaped in it's configuration with a large front aspect living room that includes a central chimney breast (ideal for a log burner installation) that opens to a dedicated dining area sitting adjacent to the conservatory & an eat-in kitchen - both of which grant direct access to a large rear garden & patio. This impressive home also benefits from a detached double garage with plumbing & electricity, with a 6-car driveway to the front. The opportunity to own an iconic Humford Way home rarely comes around, so seize the day by arranging your viewing today.



This floor plan is for illustrative purposes only. It is not drawn to scale. Any measurements, floor areas (including any total floor area), openings and orientations are approximate. No details are guaranteed, they cannot be relied upon for any purpose and do not form any part of any agreement. No liability is taken for any error, omission or misstatement. A party must rely upon its own inspection(s). Powered by www.propertybox.io

Harpers|exp UK



eXp World UK Ltd is a registered company at Level 37, 25 Canada Square, London, E14 5LQ.

Registered company number is 12016573. VAT Registration Number is 327 4120 29