






4 Curlew Close,
Offers In Region Of £250,000

 4  1  2

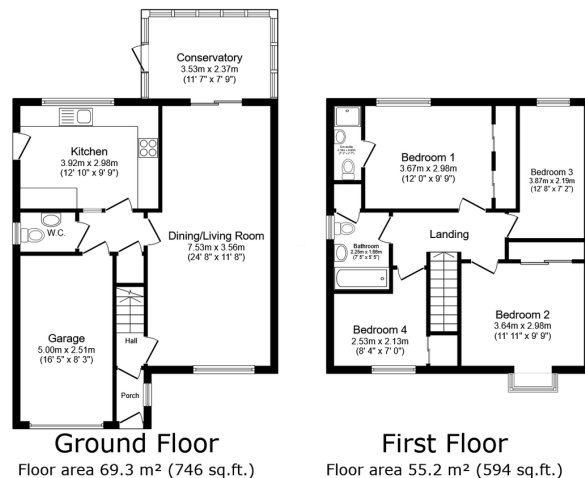


- Four Bedroom Detached Home.
- Rear Aspect Kitchen With Amazing Views.
- Master With En-Suite.
- Integral Single Garage.
- Cul-De-Sac Location.
- Good Size Open Plan Lounge/Diner.
- Four Good Size Bedrooms With Fitted Wardrobes.
- Down Stairs WC.
- Beautiful Views Over River Wansbeck
- Sought After Estate.



Four Bedroom Detached Home - Cul-De-Sac Location.

A well proportioned four bedroom detached home, situated in a cul-de-sac location, with rear views onto the Wansbeck River. The property briefly comprises of, front entrance porch, open plan lounge/diner, kitchen to the rear of the property, conservatory space to admire the views, downstairs WC and access to integral garage. The first floor consists of four well proportioned bedrooms with fitted wardrobes, the master having an en suite room, along with the family bathroom, completes the first floor accommodation. Externally you will find the well maintained gardens, a single garage and ample driveway parking. If your looking for a good sized home with fantastic views, this home is a must view.



TOTAL: 124.5 m² (1,340 sq.ft.)

This floor plan is for illustrative purposes only. It is not drawn to scale. Any measurements, floor areas (including any total floor area), openings and orientations are approximate. No details are guaranteed, they cannot be relied upon for any purpose and do not form any part of any agreement. No liability is taken for any error, omission or misstatement. A party must rely upon its own inspection(s). Powered by www.propertybox.co.uk

Dawn
Harpersexp UK

eXp World UK Ltd is a registered company at Level 37, 25 Canada Square, London, E14 5LQ.

Registered company number is 12016573. VAT Registration Number is 327 4120 29