



## Bluebell Drive, Blossom Park, Pegswood NE61 6FS.

Offers In Region Of £230,000

🛏 3 🍳 2 🛋 2



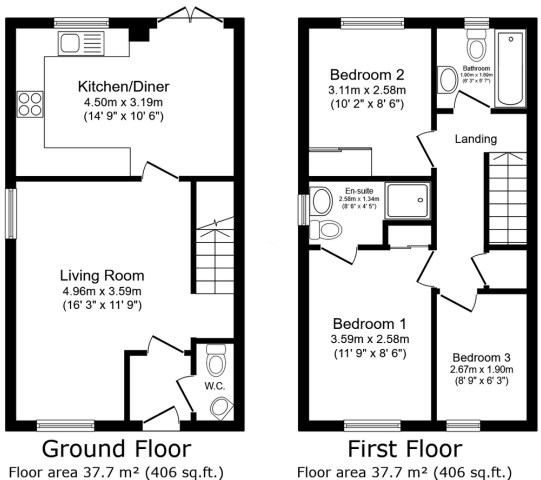
- Three Bedroom Family Home.
- Full Width Kitchen/Diner
- Three Bedrooms, Two With Fitted Wardrobes.
- Downstairs WC.
- No Upper Chain.
- Front Aspect Lounge.
- French Doors Leading To Rear Garden.
- En Suite To Master Bedroom.
- Double Driveway.
- Good Position With Views Onto Open Fields.





# Three Bedroom Family Home - Blossom Park, On The Outskirts Of Morpeth.

This 3 bedroom family home sits on a great plot with views onto open fields. On entering the property you have the downstairs WC, front aspect lounge, to the rear of the property is the full width well equipped kitchen/diner, with French doors giving excess to the rear garden. On the first floor there are three bedrooms (two with built in wardrobes) the master with en-suite shower room and the three piece bathroom completes the first floor. Externally to the rear of the property is a lawn & decking area, the front of the property gives way to a double driveway and space for extra parking. There is also a gated side entrance to rear of the property. A must view property with the added bonus of no upper chain.



TOTAL: 75.5 m<sup>2</sup> (812 sq.ft.)

This floor plan is for illustrative purposes only. It is not drawn to scale. Any measurements, floor areas (including any total floor area), openings and orientations are approximate. No details are guaranteed, they cannot be relied upon for any purpose and do not form any part of any agreement. No liability is taken for any error, omission or misstatement. A party must rely upon its own inspection(s). Powered by [www.propertybox.co.uk](http://www.propertybox.co.uk)

**Dawn**  
**Harpers&exp** UK

