





## Warren Court, Ashington, NE63 8LL

Offers In Region Of £280,000

🛏 4 🍳 2 🛋 2



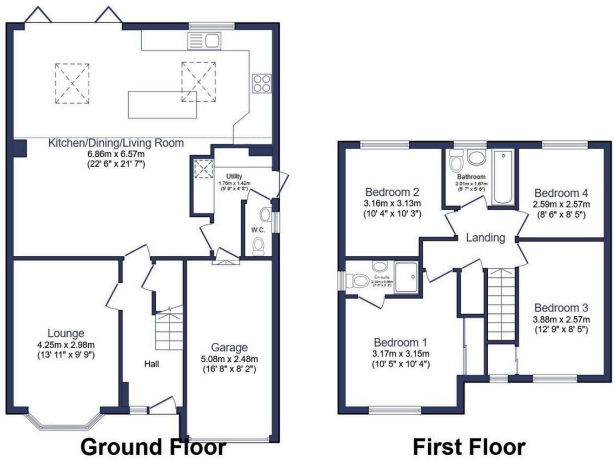
- Detached Family Home.
- Front Aspect Living Room.
- Family Bathroom.
- Downstairs WC.
- Double Driveway.
- Four Bedrooms, Master With En-Suite.
- Stunning Kitchen/Diner/ Family Room.
- Utility Room.
- integral Single Garage.
- South Facing Garden & Woodlands To Rear Of Property.





**Four Bedroom Extended Detached Family Home - Cul-de-Sac Location.**

Offered to the market this very attractive extended detached home, that must be viewed to be truly appreciated. Situated in a peaceful cul-de-sac this impressive property offers great internal proportions over two levels - four good sized bedrooms with en-suite shower room to the master bedroom, and the family bathroom completes the first floor. on the ground floor is a lovely cosy front aspect living room , the rear of the property you will find full width kitchen/diner/family room that is a masterpiece in itself. Further benefits to this appealing house include a separate utility room, a downstairs WC, the rear south facing garden has been landscaped with external gate leading onto woodlands. Out the front you'll find a double driveway & single garage with electric charging point.



Total floor area 137.2 m<sup>2</sup> (1,477 sq.ft.) approx

This floor plan is for illustrative purposes only. It is not drawn to scale. Any measurements, floor areas (including any total floor area), openings and orientation are approximate. No details are guaranteed, they cannot be relied upon for any purpose and they do not form part of any agreement. No liability is taken for any error, omission or misstatement. A party must rely upon its own inspection(s). Powered by [www.focalagent.com](http://www.focalagent.com)

