



27 Rothesay Terrace

£90,000

🛏️ 2 🍽️ 1 🚗 1



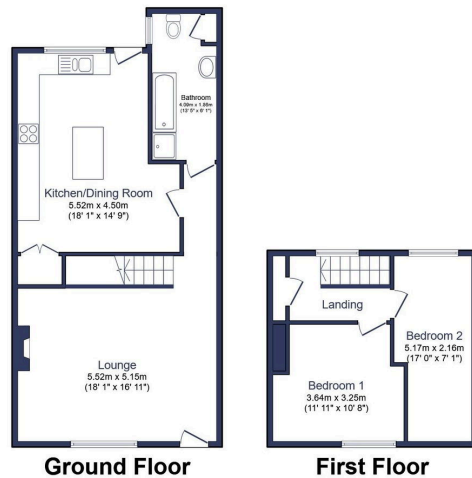
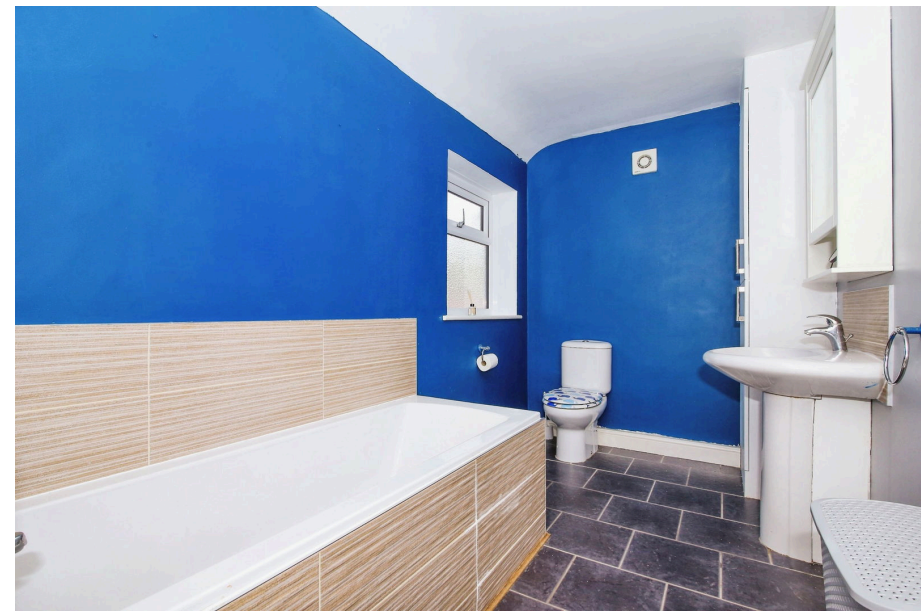
- Terraced Period Home
- Large Open Plan Living Room
- Generous Kitchen/Diner
- Large Under Stair Cupboard
- No Onward Chain
- Two Bedrooms
- Ground Floor 4-Piece Bathroom
- Enclosed Rear Courtyard Garden
- Impressive Internal Proportions
- Great First Home or Rental Investment



If you are on the lookout for your first home or perhaps a rental investment, then this property is certainly worth considering - located within close proximity of upcoming rail connections to Newcastle and boasting impressive internal proportions, this two double bedroom period property comes to market with no related onward chain.

Key features include a generous open-plan living space, a spacious kitchen/diner as well as a 4-piece ground floor bathroom. There is also an enclosed rear courtyard garden, a large under-stair cupboard for all of your storage needs plus a large loft space accessed from the first floor landing.

The current owner has taken the time to keep the property well maintained throughout giving you peace of mind that it's ready to move straight into.



Total floor area 89.9 m² (967 sq.ft.) approx

This floor plan is for illustrative purposes only. It is not drawn to scale. Any measurements, floor areas (including any total floor area), openings and orientation are approximate. No details are guaranteed, they cannot be relied upon for any purpose and they do not form part of any agreement. No liability is taken for any error, omission or misstatement. A party must rely upon its own inspection(s). Powered by www.focalagent.com

14/09/2024, 06:12 Energy performance certificate (EPC) - Find an energy certificate - GOV.UK

Energy performance certificate (EPC)		
22, Rothsey Terrace BEDFORD MK42 9JG	Energy rating D	Valid until: 14 December 2024
Property type Mid-terrace house		Certificate number: 9892-2875-6428-8894-2021
Total floor area 74 square metres		

Rules on letting this property

Properties can be let if they have an energy rating from A to E.

You can read [guidance for landlords on the regulations and exemptions](https://www.gov.uk/guidance/landlords-on-the-requirements-and-exemptions) (<https://www.gov.uk/guidance/landlords-on-the-requirements-and-exemptions>)

Energy rating and score

This property's energy rating is D. It has the potential to be B.

[See how to improve this property's energy efficiency.](#)

The graph shows this property's current and potential energy rating.

Properties get a rating from A (best) to G (worst) and a score. The better the rating and score, the lower your energy bills are likely to be.

For properties in England and Wales:
the average energy rating is D
the average energy score is 60

<https://find-energy-certificates.service.gov.uk/energy-certificates/9892-2875-6428-8894-2021>

1/4

eXp World UK Ltd is a registered company at Level 37, 25 Canada Square, London, E14 5LQ.

Registered company number is 12016573. VAT Registration Number is 327 4120 29