



7 Hollymount Square

£140,000

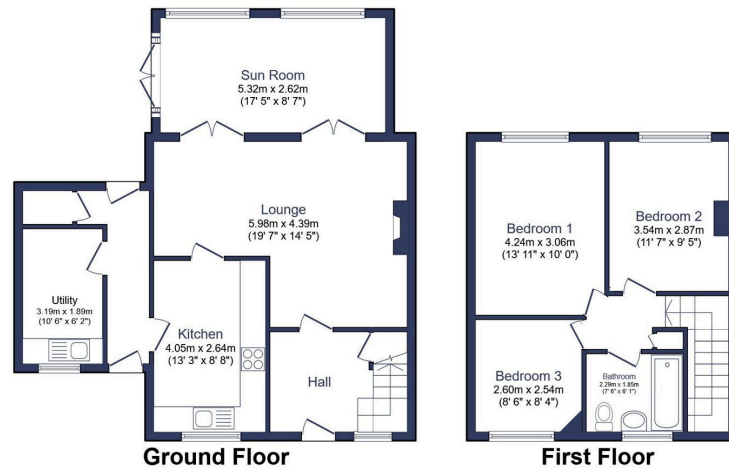
🛏️ 3 🚿 1 🛋️ 2



- Semi-Detached Home
- Spacious L-Shaped Reception Room
- Extended Sun Room/Dining Space
- Double Driveway
- Complete Onward Chain
- Three Well Proportioned Bedrooms
- Good-Sized Kitchen & Separate Utility Space
- Large Rear Garden
- Well Presented Throughout
- Great Location



Located within a popular residential location at the top end of Bedlington, this attractive extended semi-detached home is offered to market with an onward chain already in place. There are three well proportioned bedrooms along with a modern three-piece family bathroom at first floor level. Across the ground floor, you'll find generous living accommodation in the shape of an L-shaped reception space & an extended sun room that currently serves as the principle dining room of the home. With a well appointed kitchen, a separate utility room within the original wash house as well as brilliant South facing rear garden and double driveway to the front, this is a great home in a strong location for those either seeking their first home, a moderate upsize or perhaps even a downsize if your ascent up the property ladder is coming to an end.



Total floor area 110.2 m² (1,186 sq.ft.) approx

This floor plan is for illustrative purposes only. It is not drawn to scale. Any measurements, floor areas (including any total floor area), openings and orientation are approximate. No details are guaranteed, they cannot be relied upon for any purpose and they do not form part of any agreement. No liability is taken for any error, omission or misstatement. A party must rely upon its own inspection(s). Powered by www.focalagent.com



eXp World UK Ltd is a registered company at Level 37, 25 Canada Square, London, E14 5LQ.

Registered company number is 12016573. VAT Registration Number is 327 4120 29