



209 North Ridge

Offers Over £75,000

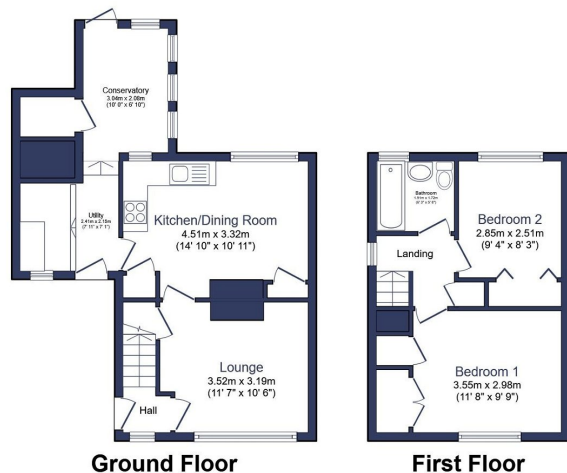
🛏️ 2 🚽 1 🛋️ 2



- Semi-Detached Home
- Two Double Bedrooms
- Upstairs Family Bathroom
- Front Aspect Living Room
- Kitchen/Diner
- Separate Utility Space & Conservatory
- Enclosed Rear Garden
- In Need Of Modernisation Throughout
- No Onward Chain
- ****Truss Steel Construction****



A fantastic opportunity for someone to add their own stamp, as this sizeable two double bedroom semi-detached home is offered to the market with no onward chain in need of modernisation throughout. Arranged over two floors, along with the two well proportioned bedrooms (both with built-in storage), there is a three-piece family bathroom, boiler cupboard & loft access above the landing. It's across the ground floor space where you have the greatest scope for change, with a front aspect living room, a full width kitchen/breakfast room as well as a separate utility room & conservatory to the rear where others in this location have created a double reception room with separate kitchen to the side. The property also benefits from both a front & rear gardens. If you fancy a project and the opportunity to add value to a property, please get in touch to confirm access arrangements.



Total floor area 75.8 m² (816 sq.ft.) approx

This floor plan is for illustrative purposes only. It is not drawn to scale. Any measurements, floor areas (including any total floor area), openings and orientation are approximate. No details are guaranteed, they cannot be relied upon for any purpose and they do not form part of any agreement. No liability is taken for any error, omission or misstatement. A party must rely upon its own inspection(s). Powered by www.focalagent.com



eXp World UK Ltd is a registered company at Level 37, 25 Canada Square, London, E14 5LQ.

Registered company number is 12016573. VAT Registration Number is 327 4120 29