



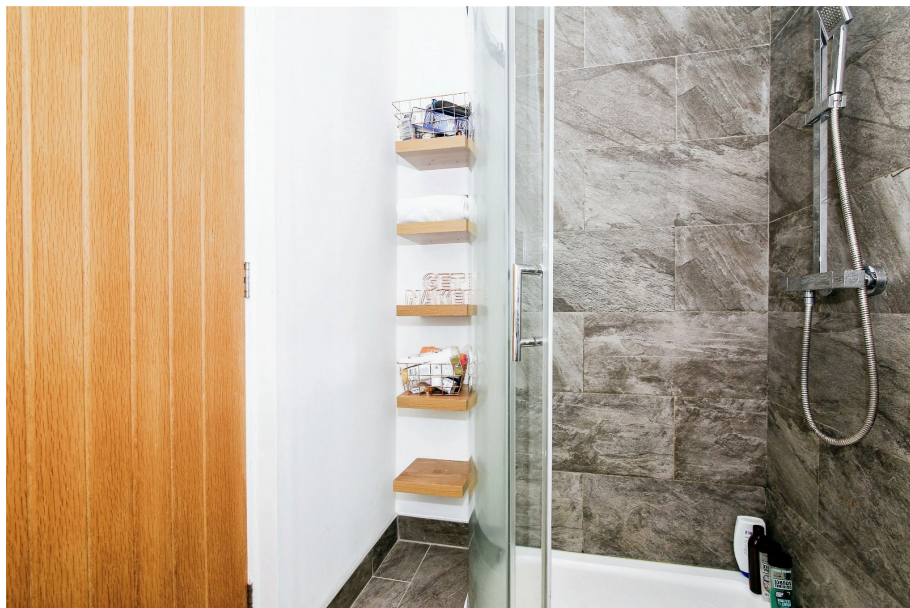
27 Belsay Grove

Offers Over £250,000

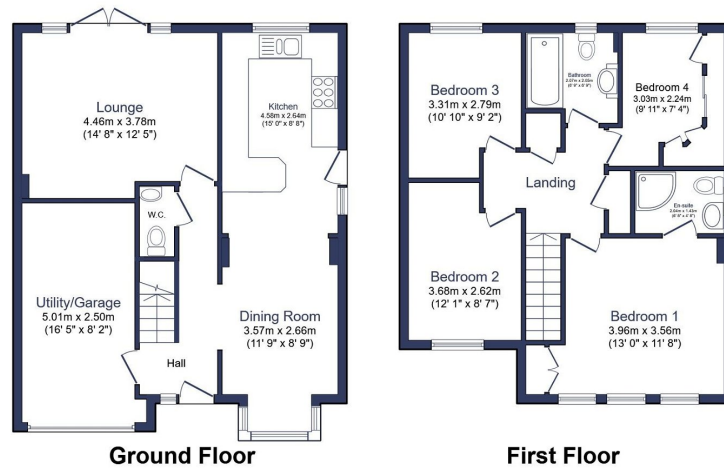
🛏️ 4 🚿 2 🛋️ 2



- Detached Family Home
- Four Bedrooms
- Modern Family Bathroom & En-Suite Shower Room
- Impressive Front 2 Back Kitchen/Dining Room
- Spacious Rear Aspect Living Room
- Large South/South West Facing Rear Garden & Patio
- Double Driveway & Integral Garage
- Downstairs WC
- Beautifully Presented Throughout
- Popular Residential Location Close To Upcoming Rail Links



Introducing this attractive detached family home located within a secluded cul-de-sac plot within close proximity of local amenities as well as the long awaited upcoming rail links to Newcastle. Presented beautifully throughout, this home offers four spacious bedrooms (two with built in storage) a modern family bathroom as well as an ensuite shower room off of bedroom one. The ground floor space is very welcoming with a full depth front 2 back kitchen/dining room as well as a spacious living room with views through the double doors to a really well proportioned South/South West facing rear garden & patio. Further benefits include a downstairs WC, a single garage with internal access that doubles as a utility space as well as a double driveway out front. One of the most attractive homes to hit the local sales market within this development, please get in touch to confirm viewing arrangements.



Total floor area 118.5 m² (1,276 sq.ft.) approx

This floor plan is for illustrative purposes only. It is not drawn to scale. Any measurements, floor areas (including any total floor area), openings and orientation are approximate. No details are guaranteed, they cannot be relied upon for any purpose and they do not form part of any agreement. No liability is taken for any error, omission or misstatement. A party must rely upon its own inspection(s). Powered by www.focalagent.com



eXp World UK Ltd is a registered company at Level 37, 25 Canada Square, London, E14 5LQ.

Registered company number is 12016573. VAT Registration Number is 327 4120 29