



4 Kirkharle Crescent

Offers Over £200,000

🛏️ 4 🍽️ 2 🛋️ 2



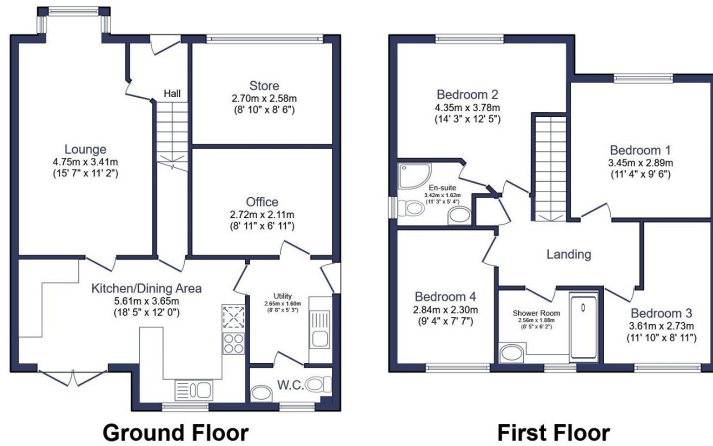
- Detached Family Home
- Family Shower Room & Ensuite Shower Room
- Kitchen/Diner To The Rear
- Play Room Within Converted Garage
- Great Sized South Facing Rear Garden
- Four Bedrooms
- Spacious Bay-Fronted Living Room
- Separate Utility Room & Downstairs WC
- In Need Of Updating In Places
- Popular Residential Location



A well proportioned family home within a popular modern development on the North side of Ashington.

Arranged over two floors, this detached home offers four spacious bedrooms, two shower rooms (both of which would benefit from being updated or replaced) a spacious front aspect living room with bay window along with a large kitchen/diner to the rear overlooking the generous South facing rear garden. Further benefits include a utility room, a downstairs WC and a play room within the rear part of the converted garage space.

This home offers fantastic value for money and whilst there is updating to be done, there's a great deal of home on offer for the price - please call today to arrange immediate viewing access.



Total floor area 132.4 m² (1,425 sq.ft.) approx

This floor plan is for illustrative purposes only. It is not drawn to scale. Any measurements, floor areas (including any total floor area), openings and orientation are approximate. No details are guaranteed, they cannot be relied upon for any purpose and they do not form part of any agreement. No liability is taken for any error, omission or misstatement. A party must rely upon its own inspection(s). Powered by www.focalagent.com



eXp World UK Ltd is a registered company at Level 37, 25 Canada Square, London, E14 5LQ.

Registered company number is 12016573. VAT Registration Number is 327 4120 29