

HoldenCopley

PREPARE TO BE MOVED

Broadleaf Drive, Bakersfield, Nottinghamshire NG3 7EA

£310,000

Broadleaf Drive, Bakersfield, Nottinghamshire NG3 7EA

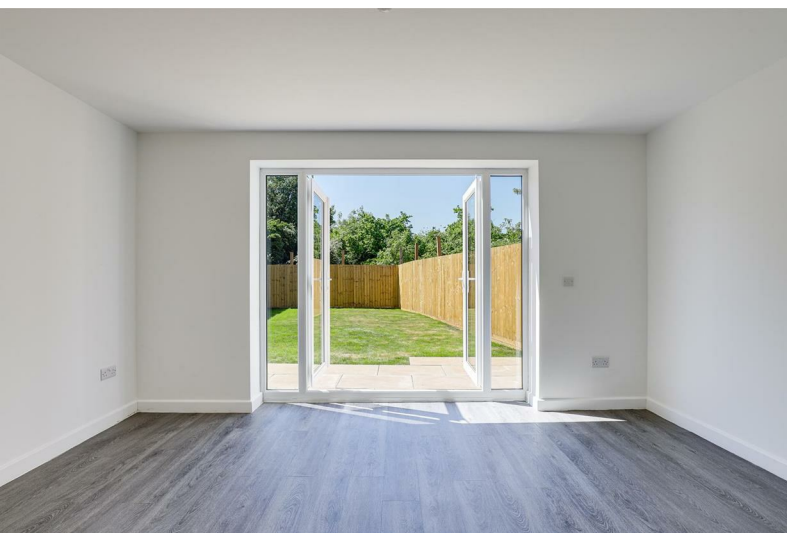


MAY INCENTIVE - STAMP DUTY INCLUDED UP TO THE VALUE OF £5,000

NEW BUILD DETACHED HOUSE...

This contemporary three-bedroom semi-detached new-build presents an excellent opportunity for a variety of buyers looking to move straight in. Located on a recently developed plot, the property benefits from close proximity to a range of local amenities, superb transport links, and great schools—all within easy reach of the City Centre. The ground floor comprises an entrance hall, a convenient W/C, a stylish modern kitchen, and a bright, spacious living room with double French doors, ideal for both everyday living and entertaining. On the first floor, there are two well-proportioned bedrooms served by a modern family bathroom, while the top floor features a generously sized double bedroom complete with an en-suite and a built-in storage cupboard. Externally, the property benefits from off-road parking to the front and a private, south-west facing rear garden with a lawn and patio area—perfect for outdoor relaxation and family gatherings.

MUST BE VIEWED





- New Build Detached House
- Three Bedrooms
- Modern Fitted Kitchen
- Spacious Reception Room With French Doors
- Ground Floor W/C
- Three Piece Bathroom Suite & En-Suite
- Off-Road Parking
- Private South-West Facing Garden
- No Upward Chain
- Must Be Viewed





GROUND FLOOR

Entrance Hall

14'2" x 3'10" (4.32m x 1.18m)

The entrance hall has a radiator and a single composite door providing access into the accommodation.

W/C

3'2" x 6'5" (0.97m x 1.96m)

This space has a low level flush W/C, a pedestal wash basin with a tiled splashback, a radiator and a UPVC double-glazed obscure window to the front elevation.

Kitchen

12'4" x 6'7" (3.78m x 2.03m)

The kitchen has a range of fitted base and wall units with worktops, an integrated oven, a hob with an extractor hood, a stainless steel sink with a drainer and a swan neck mixer tap, space and plumbing for a washing machine, space for a fridge-freezer, a radiator, recessed spotlights and a UPVC double-glazed window to the front elevation.

Living Room

14'0" x 13'8" (4.28m x 4.18m)

The living room has a built-in cupboard, a radiator and UPVC double French doors providing access out to the garden.

FIRST FLOOR

Landing

3'1" x 9'7" (0.94m x 2.92m)

The landing has a radiator and provides access to the first floor accommodation.

Master Bedroom

14'0" x 13'4" (4.27m x 4.08m)

The main bedroom has a UPVC double-glazed window to the rear elevation and a radiator.

Bedroom Two

7'1" x 12'8" (2.17m x 3.88m)

The second bedroom has a UPVC double-glazed window to the front elevation and a radiator.

Bathroom

6'5" x 6'5" (1.96m x 1.96m)

The bathroom has a low level flush W/C, a pedestal wash basin with a tiled splashback, a fitted panelled bath with a mains-fed over the head rainfall shower, a hand-held shower and a glass shower screen, waterproof wall panels, a chrome heated towel rail, recessed spotlights, an extractor fan and a UPVC double-glazed obscure window to the front elevation.

SECOND FLOOR

Landing

3'8" x 4'0" (1.12m x 1.24m)

The landing provides access to the second floor accommodation.

Bedroom Three

10'3" x 11'0" (3.13m x 3.37m)

The third bedroom has a velux window to the front elevation, a radiator and access into the en-suite.

En-Suite

5'2" x 7'3" (1.58m x 2.21m)

The en-suite has a low level flush W/C, a pedestal wash basin with a tiled splashback, a fitted shower enclosure with a mains-fed over the head rainfall shower and a hand-held shower, a chrome heated towel rail, waterproof wall panels, recessed spotlights and an extractor fan.

Cupboard

4'1" x 6'4" (1.26m x 1.95m)

The cupboard has lighting and storage space.

OUTSIDE

Front

To the front is a driveway providing off-road parking.

Rear

To the rear is a private south-west facing garden with a fence panelled boundary, a patio, a lawn and a single wooden gate.

ADDITIONAL INFORMATION

- Electricity – Mains Supply
- Water – Mains Supply
- Heating – Gas Central Heating – Connected to Mains Supply
- Septic Tank – No
- Broadband Speed - Unavailable
- Phone Signal – 3G, 4G & 5G available
- Sewage – Mains Supply
- Flood Risk – No flooding in the past 5 years
- Low risk of flooding
- Non-Standard Construction – No
- Any Legal Restrictions – No
- Other Material Issues – No
- Access road made up and adopted? No

DISCLAIMER

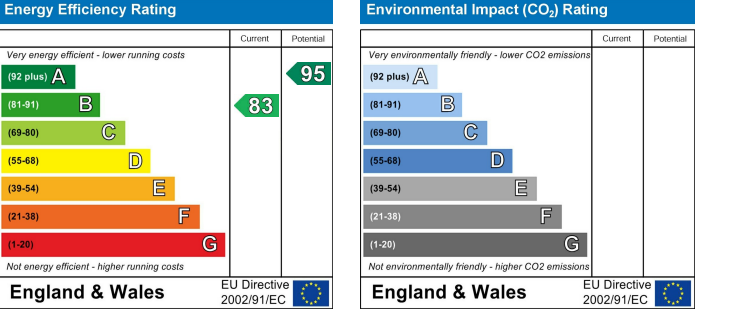
Council Tax Band Rating - Nottingham City Council - Band C
This information was obtained through the directgov website. HoldenCopley offer no guarantee as to the accuracy of this information, we advise you to make further checks to confirm you are satisfied before entering into any agreement to purchase.

The vendor has advised the following:
Property Tenure is Freehold

Agents Disclaimer: HoldenCopley, their clients and employees I: Are not authorised to make or give any representations or warranties in relation to the property either here or elsewhere, either on their own behalf or on behalf of their client or otherwise. They assume no responsibility for any statement that may be made in these particulars. These particulars do not form part of any offer or contract and must not be relied upon as statements or representations of fact. 2: Any areas, measurements or distances are approximate. The text, photographs and plans are for guidance only and are not necessarily comprehensive. It should not be assumed that the property has all necessary planning, building regulation or other consents and HoldenCopley have not tested any services, equipment or facilities. Purchasers must make further investigations and inspections before entering into any agreement.

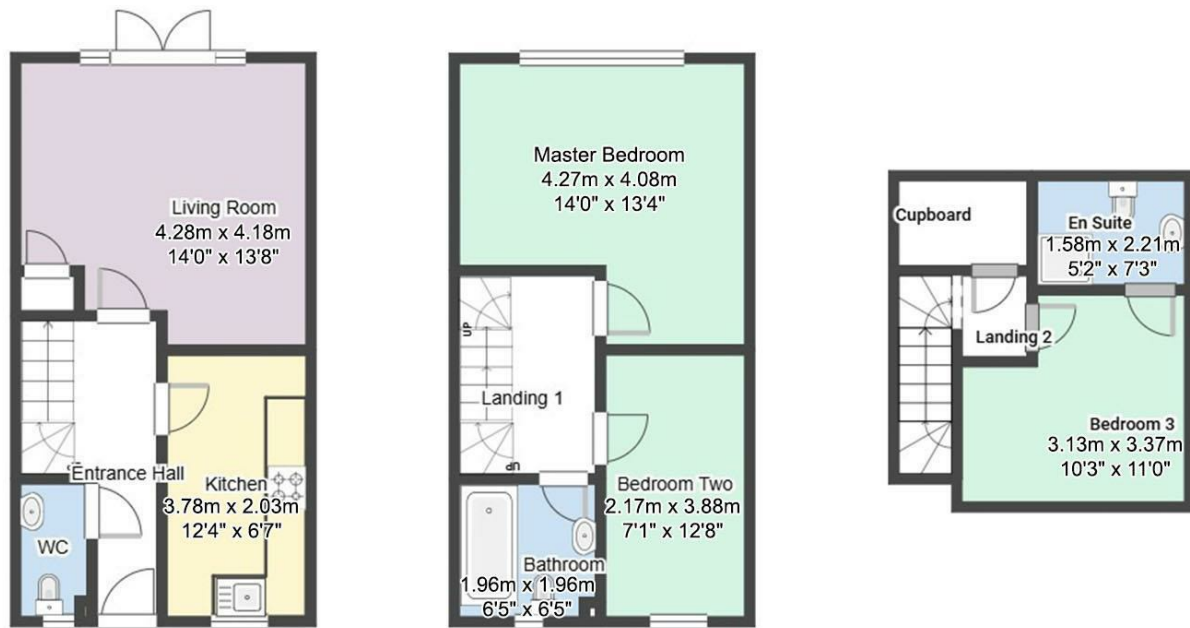
Purchaser information -The Money Laundering, Terrorist Financing and Transfer of Funds(Information on the Payer) Regulations 2017(MLR 2017) came into force on 26 June 2017. HoldenCopley require any successful purchasers proceeding with a property to provide two forms of identification i.e. passport or photocard driving license and a recent utility bill or bank statement. We are also required to obtain proof of funds and provide evidence of where the funds originated from. This evidence will be required prior to HoldenCopley removing a property from the market and instructing solicitors for your purchase.

Third Party Referral Arrangements - HoldenCopley have established professional relationships with third-party suppliers for the provision of services to Clients. As remuneration for this professional relationship, the agent receives referral commission from the third-party companies. Details are available upon request.



Broadleaf Drive, Bakersfield, Nottinghamshire NG3 7EA

HoldenCopley
PREPARE TO BE MOVED



FLOORPLAN IS FOR ILLUSTRATIVE PURPOSES ONLY

All measurements walls, doors, windows, fittings and appliances, their sizes and locations are an approximate only. They cannot be regarded as being a representation by the seller nor their agent and is for identification only. Not to scale.
© HoldenCopley

0115 7734300

906A Woodborough Road, Mapperley, Nottingham, NG3 5QR

mapperleyoffice@holdencopley.co.uk

www.holdencopley.co.uk

Agents Disclaimer: HoldenCopley, their clients and employees I: Are not authorised to make or give any representations or warranties in relation to the property either here or elsewhere, either on their own behalf or on behalf of their client or otherwise. They assume no responsibility for any statement that may be made in these particulars. These particulars do not form part of any offer or contract and must not be relied upon as statements or representations of fact. 2: Any areas, measurements or distances are approximate. The text, photographs and plans are for guidance only and are not necessarily comprehensive. It should not be assumed that the property has all necessary planning, building regulation or other consents and HoldenCopley have not tested any services, equipment or facilities. Purchasers must make further investigations and inspections before entering into any agreement.