



10 Ling Drive

Atherton, Manchester, M46 9BH

Offers in the region of £189,995

JonesPottsTaylor are delighted to present FOR SALE this extended, two bedroom, semi-detached true bungalow. Situated in a sought-after residential location in Atherton, close to transport and network links, schools, shops and amenities. The property briefly comprises of; hallway, sitting room, kitchen, a rear reception room, two well proportioned bedrooms, both benefitting from fitted wardrobes and a bathroom with three piece suite. The loft has been fully boarded and is accessed by a pull down ladder. Outside to the front is an enclosed garden with driveway to side leading to a detached single garage, whilst to the rear is an enclosed low maintenance garden.

Viewings for this property are a must to appreciate the potential development opportunity.

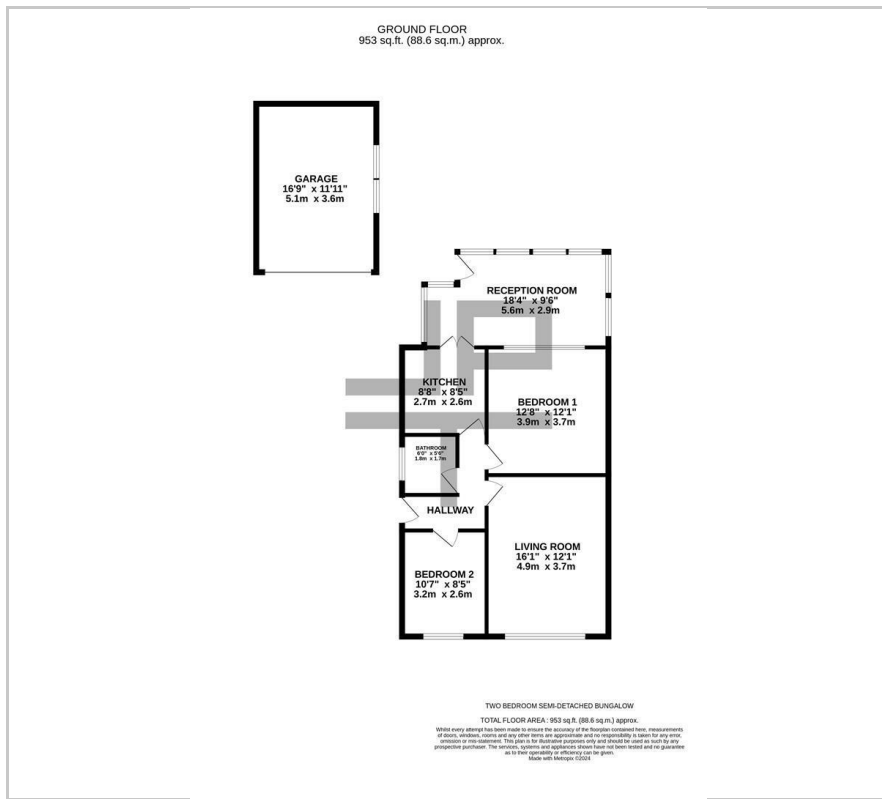
- No Onward Chain
- Sought After Location
- Potential Development Opportunity
- Ample Parking With Detached Garage
- Additional Loft Space
- Gas Central Heating & UPVC Double Glazed Windows

Viewing

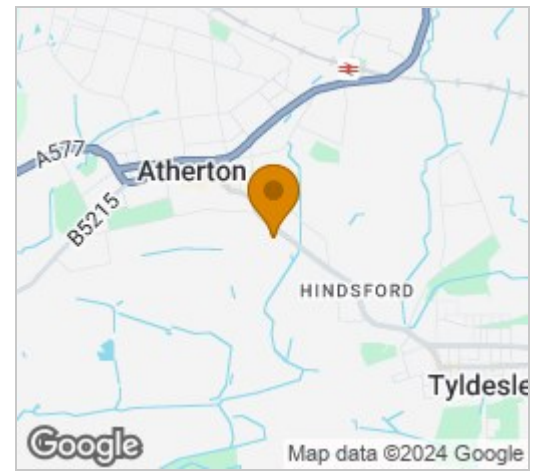
Please contact our Jones Potts Taylor Office on 01942 368600 if you wish to arrange a viewing appointment for this property or require further information.



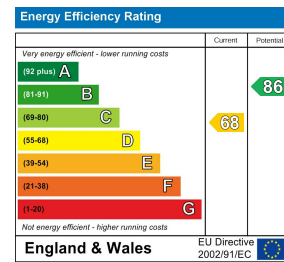
Floor Plan



Area Map



Energy Efficiency Graph



These particulars, whilst believed to be accurate are set out as a general outline only for guidance and do not constitute any part of an offer or contract. Intending purchasers should not rely on them as statements of representation of fact, but must satisfy themselves by inspection or otherwise as to their accuracy. No person in this firm's employment has the authority to make or give any representation or warranty in respect of the property.