



JONES POTTS TAYLOR



1 Elizabeth Street

, Leigh, WN7 3AA

£800 PCM

JonesPottsTaylor are pleased to present TO LET this immaculately presented, newly refurbished, extended two bedroom mid-terrace property. Situated in a residential location in Leigh, close to transport and network links, schools, shops and amenities. The property briefly comprises of; entrance vestibule, sitting room and a separate open plan dining room / kitchen. To the first floor are two double bedrooms and a further three piece family bathroom. Outside to the front and rear is an enclosed, low maintenance garden.

Viewings will be required and under a block viewing schedule.

Viewing

Please contact our Jones Potts Taylor Office on 01942 368600 if you wish to arrange a viewing appointment for this property or require further information.



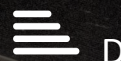
2



1



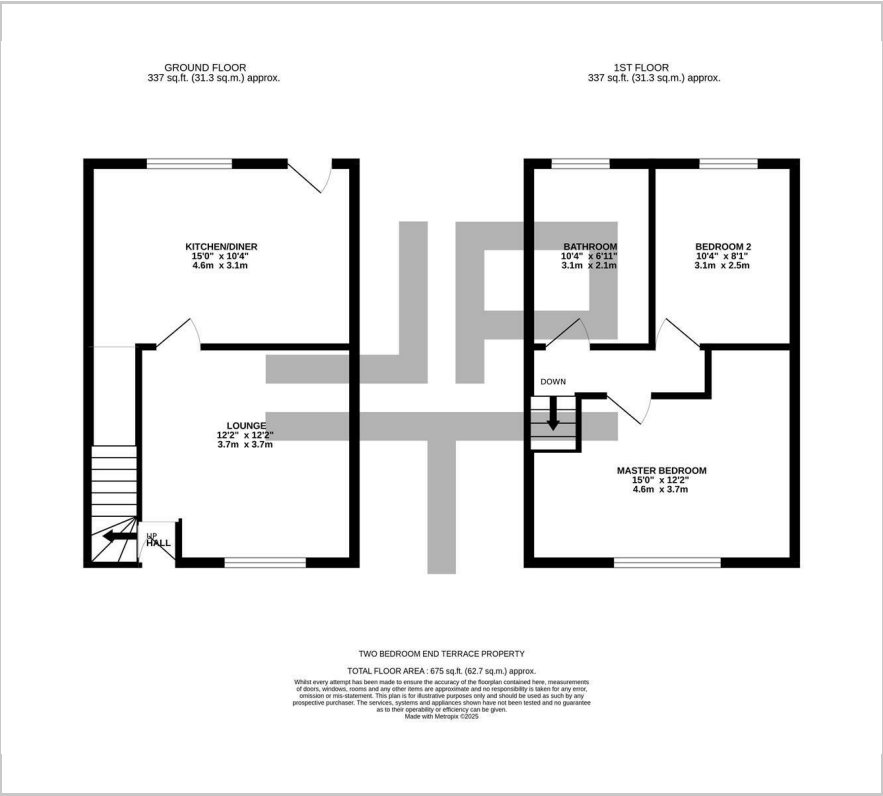
1



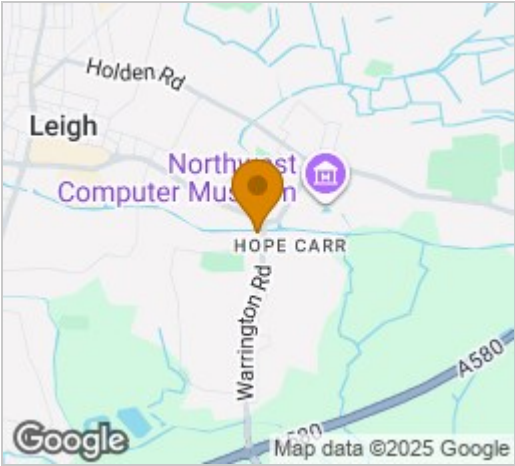
D



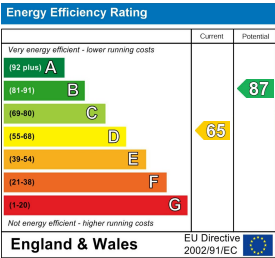
Floor Plan



Area Map



Energy Efficiency Graph



These particulars, whilst believed to be accurate are set out as a general outline only for guidance and do not constitute any part of an offer or contract. Intending purchasers should not rely on them as statements of representation of fact, but must satisfy themselves by inspection or otherwise as to their accuracy. No person in this firms employment has the authority to make or give any representation or warranty in respect of the property.