



JONES POTTS TAYLOR



44 Harbourne Avenue

Worsley, Manchester, M28 7UD

£400,000

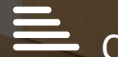
JonesPottsTaylor are delighted to present FOR SALE this extended, FOUR bedroom semi-detached Dorma bungalow. Situated in a desirable residential area in Worsley, close to major transport and network links, schools, shops and amenities. The property briefly comprises of; entrance hallway, sitting room, kitchen, a family bathroom with three piece suite, double bedroom and a rear study / play room with French doors leading to a conservatory. To the first floor are three double bedrooms, master with en-suite, and a spacious landing area. Outside to the front and rear are enclosed, low maintenance gardens and a driveway for multiple vehicles. A detached garage completes the property

Viewings are highly recommended to fully appreciate the living space both up and downstairs.

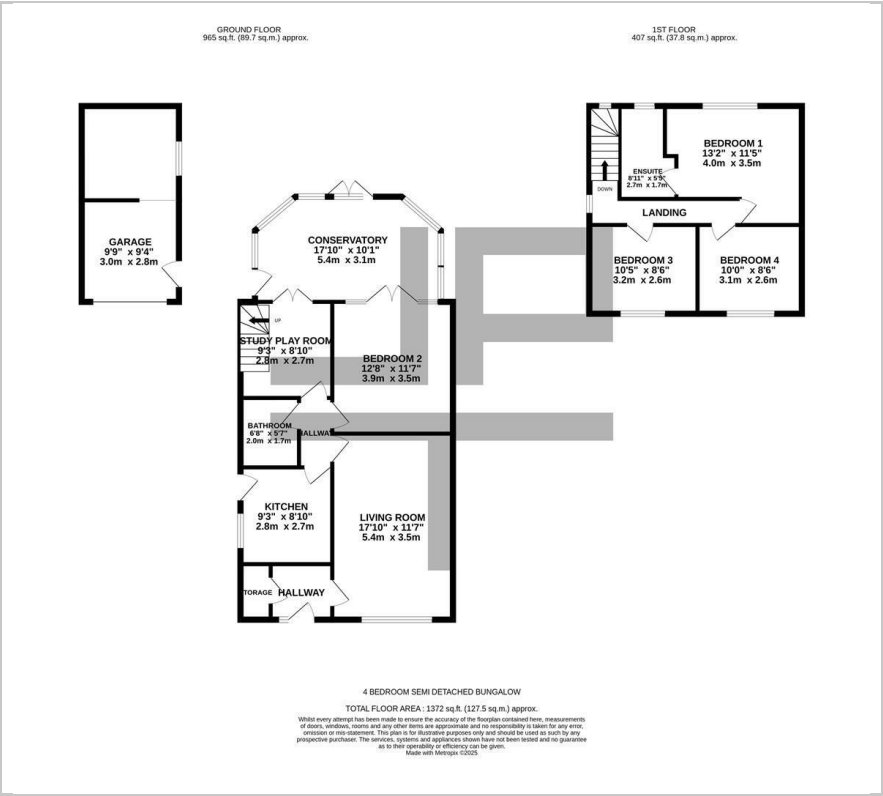
- Located Near major Network / Transport Links
- Four Double Bedrooms
- Sought After Residential Area
- EV Charging Port
- Detached Garage & Driveway
- UPVC Windows & Doors, Gas Central Heating

Viewing

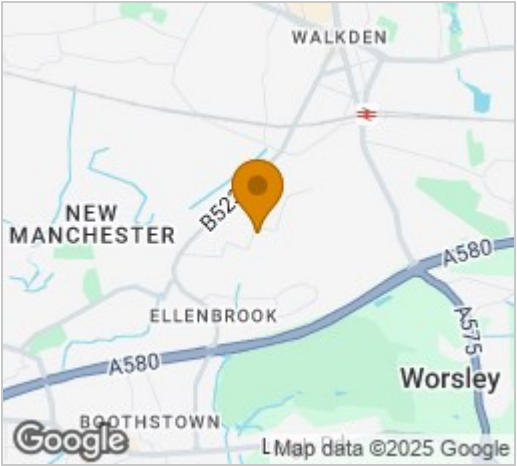
Please contact our Jones Potts Taylor Office on 01942 368600 if you wish to arrange a viewing appointment for this property or require further information.



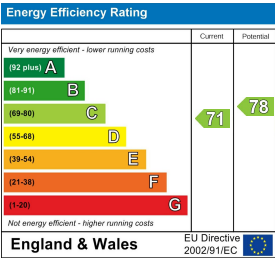
Floor Plan



Area Map



Energy Efficiency Graph



These particulars, whilst believed to be accurate are set out as a general outline only for guidance and do not constitute any part of an offer or contract. Intending purchasers should not rely on them as statements of representation of fact, but must satisfy themselves by inspection or otherwise as to their accuracy. No person in this firms employment has the authority to make or give any representation or warranty in respect of the property.