



JONES POTTS TAYLOR



26 Mather House, Mather Lane

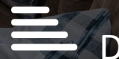
, Leigh, WN7 2FR

£1,200 PCM

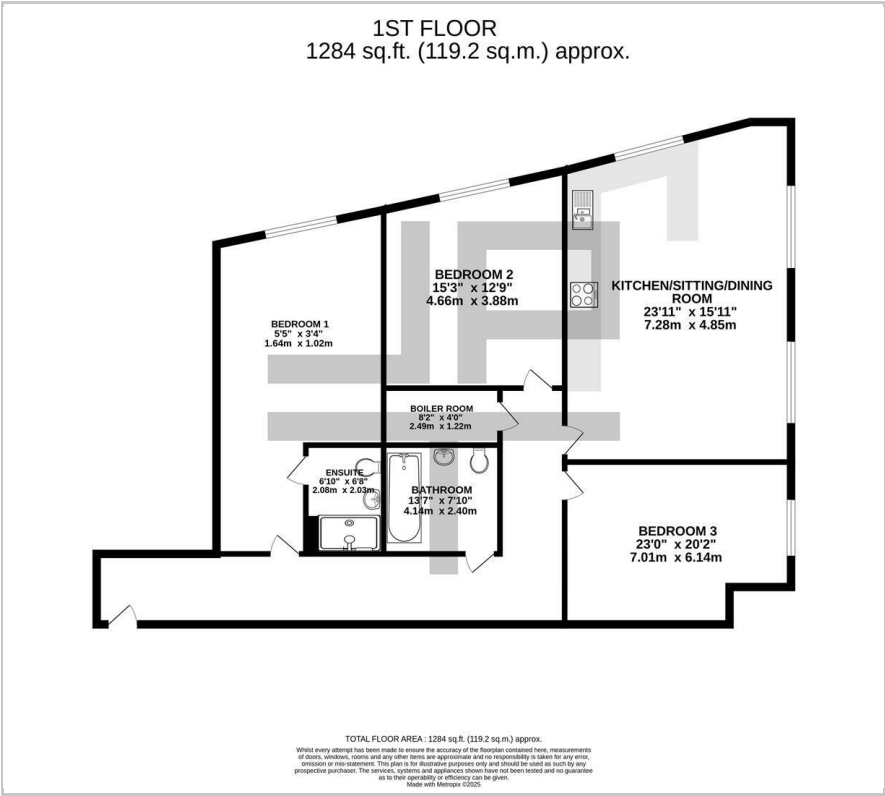
JonesPottsTaylor are delighted to offer FOR LET this spacious, three-bedroom, first floor purpose-built apartment. Situated within the sought after Mather House Development in Leigh, close to transport and network links, schools, shops and amenities. The property briefly comprises of; entrance hallway, an open plan living room, dining room and kitchen with breakfast bar and integrated appliances, three bedrooms, one benefitting from an ensuite shower room, and a further family bathroom with three-piece suite. The entire living space and each bedroom benefit from 20ft ceilings and industrial/contemporary features. The development itself has resident-only facilities, including, communal entrance and hallway, a parcel drop-off room, stair and lift access, a gymnasium, cinema room, and a resident's lounge, dining and kitchen area with a 24/7 concierge. Internal viewing is a must!

Viewing

Please contact our Jones Potts Taylor Office on 01942 368600 if you wish to arrange a viewing appointment for this property or require further information.



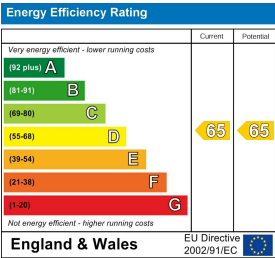
Floor Plan



Area Map



Energy Efficiency Graph



These particulars, whilst believed to be accurate are set out as a general outline only for guidance and do not constitute any part of an offer or contract. Intending purchasers should not rely on them as statements of representation of fact, but must satisfy themselves by inspection or otherwise as to their accuracy. No person in this firms employment has the authority to make or give any representation or warranty in respect of the property.