



JONES POTTS TAYLOR



16 Lulworth Drive

Hindley Green, Wigan, WN2 4QS

£230,000

JonesPottsTaylor are delighted to present FOR SALE this three-bedroom semi-detached dormer bungalow. Situated in a popular residential location in Hindley, close to transport and network links, schools, shops and amenities. The property briefly comprises of; entrance porch, hallway, sitting room, kitchen, master bedroom with fitted wardrobes and a family bathroom with three piece suite. To the first floor are a further two double bedrooms. Outside to the front is an enclosed garden and driveway which leads to a detached garage, whilst to the rear is an attractive low maintenance landscaped garden. Viewings are highly recommended to fully appreciate the potential this family home is able to offer.

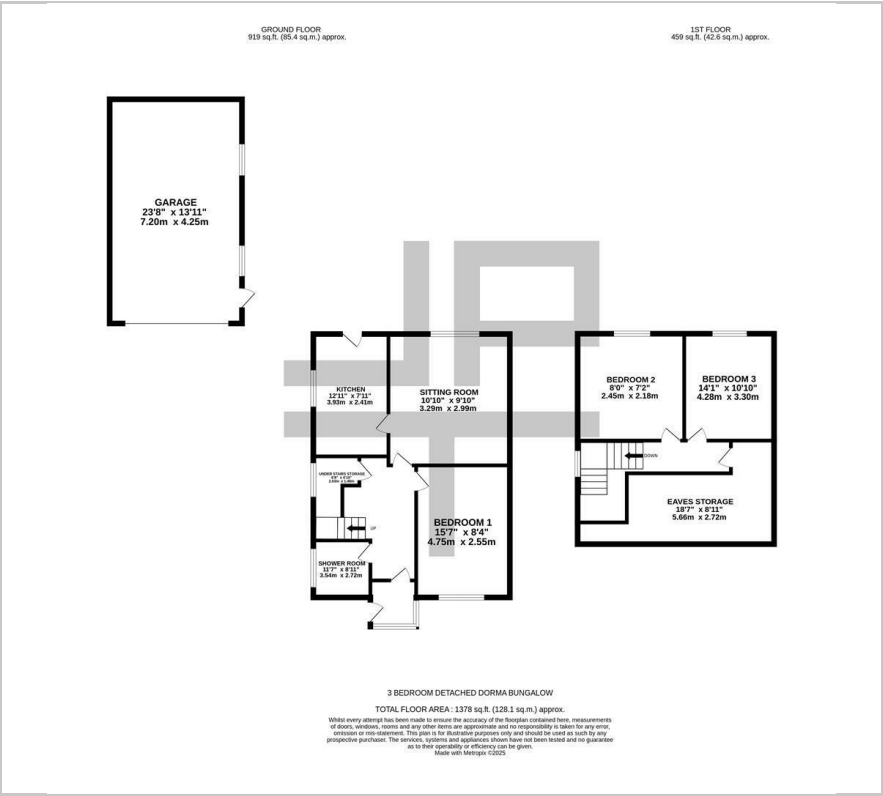
- No Onward Chain
- Three Double Bedrooms
- Landscaped Rear Garden
- Potential Development Opportunity
- Detached Garage
- Gas Central Heating & Double Glazed UPVC Windows

Viewing

Please contact our Jones Potts Taylor Office on 01942 368600 if you wish to arrange a viewing appointment for this property or require further information.



Floor Plan



Area Map



Energy Efficiency Graph



These particulars, whilst believed to be accurate are set out as a general outline only for guidance and do not constitute any part of an offer or contract. Intending purchasers should not rely on them as statements of representation of fact, but must satisfy themselves by inspection or otherwise as to their accuracy. No person in this firm's employment has the authority to make or give any representation or warranty in respect of the property.