



JONES POTTS TAYLOR



24 Mabel Street

Westhoughton, Bolton, BL5 2LB

£875

JonesPottsTaylor are pleased to present TO LET this two bedroom, garden fronted, mid-terrace property. Located in residential area of Westhoughton, close to schools, shops, amenities and transport / network links The property briefly comprises of; entrance vestibule, living room and kitchen leading to the rear garden. To the first floor are two well-proportioned bedrooms, master benefitting from fitted wardrobes and a further family bathroom with four piece suite. Outside to the front and rear are enclosed low maintenance gardens.

Viewings will be required and under a block viewing schedule.

Viewing

Please contact our Jones Potts Taylor Office on 01942 368600 if you wish to arrange a viewing appointment for this property or require further information.



2



1



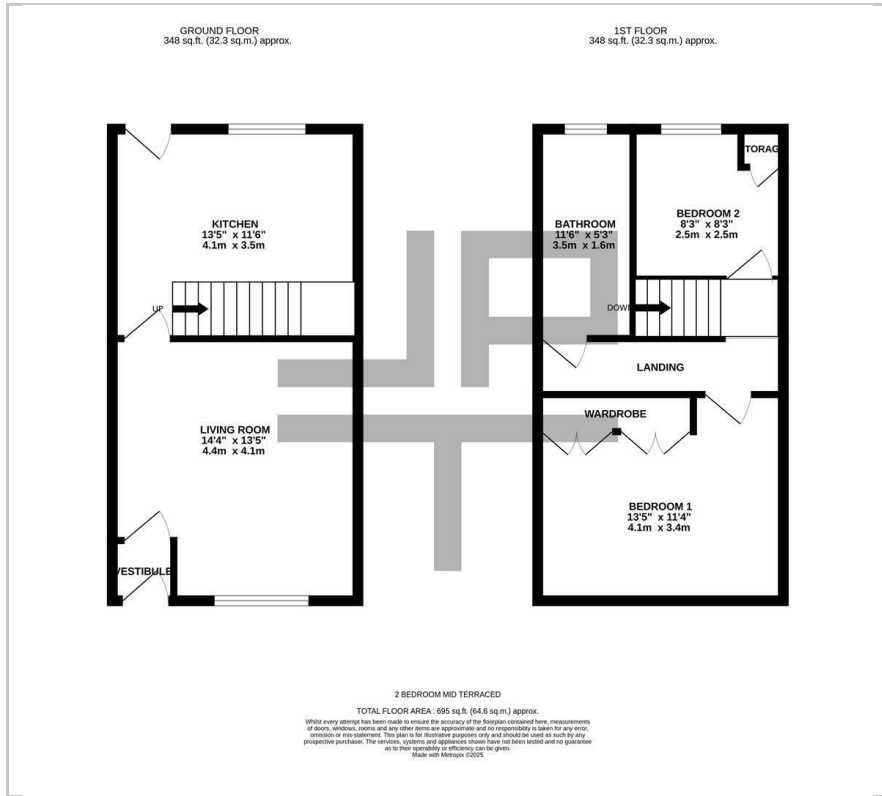
null



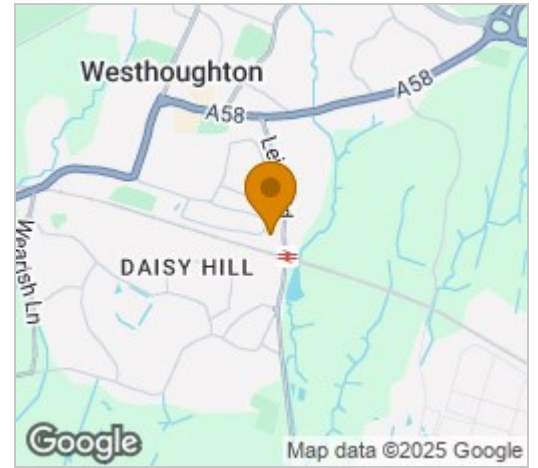
D



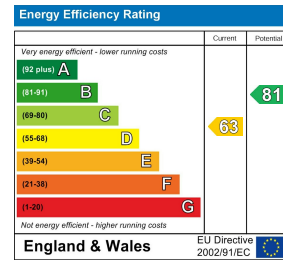
Floor Plan



Area Map



Energy Efficiency Graph



These particulars, whilst believed to be accurate are set out as a general outline only for guidance and do not constitute any part of an offer or contract. Intending purchasers should not rely on them as statements of representation of fact, but must satisfy themselves by inspection or otherwise as to their accuracy. No person in this firm's employment has the authority to make or give any representation or warranty in respect of the property.