



JONES POTTS TAYLOR



10 Barnfield Close

Tyldesley, Manchester, M29 8GP

£1,000

JonesPottsTaylor are delighted to present TO LET this three bedroom, semi-detached property. Located in a popular residential location in Tyldesley, close to schools, shops, amenities and transport links. The property briefly comprises of: entrance hallway, living room, a kitchen / dining room and conservatory with French doors leading to a rear garden. To the first floor are two double bedrooms, a single bedroom and a further family bathroom. Outside to the front is an open garden, whilst to the rear is an enclosed low maintenance, garden, with the side of the property benefitting from a driveway providing off road parking.

Viewings will be required and under a block viewing schedule.

Viewing

Please contact our Jones Potts Taylor Office on 01942 368600 if you wish to arrange a viewing appointment for this property or require further information.



3



1

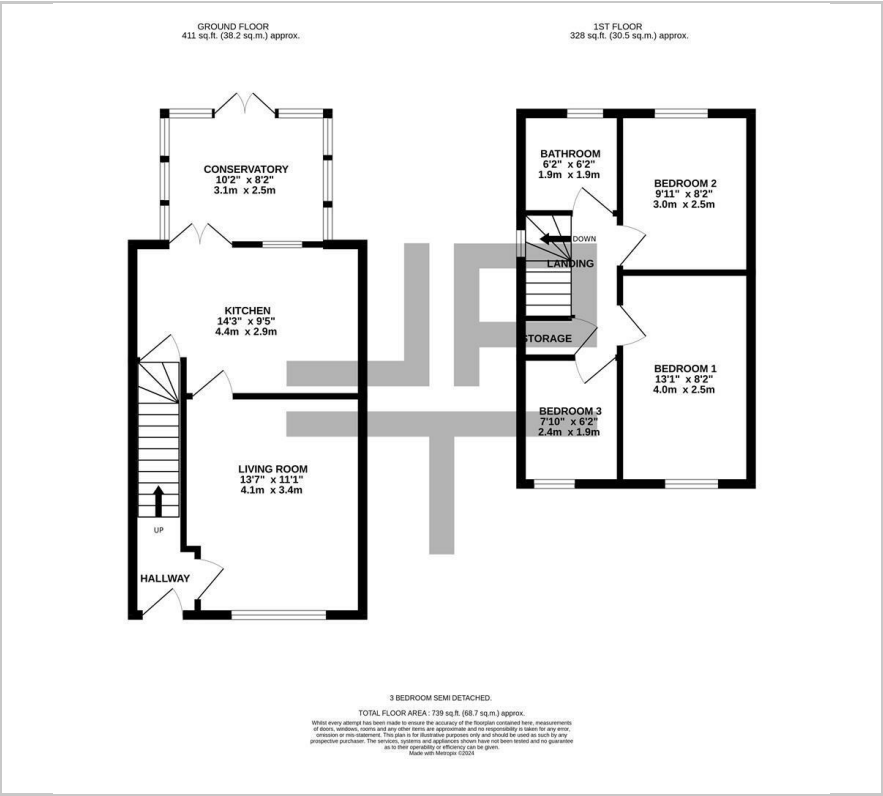


null



D

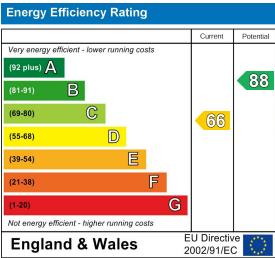
Floor Plan



Area Map



Energy Efficiency Graph



These particulars, whilst believed to be accurate are set out as a general outline only for guidance and do not constitute any part of an offer or contract. Intending purchasers should not rely on them as statements of representation of fact, but must satisfy themselves by inspection or otherwise as to their accuracy. No person in this firms employment has the authority to make or give any representation or warranty in respect of the property.