



# JONES POTTS TAYLOR



## 3 Field Street

, Salford, M6 5EY

£1,500 PCM

JonesPottsTaylor are delighted to present TO LET this deceptively spacious three double bedroom end terrace property. Situated in a sought-after residential location in Salford, close to network and transport links, schools, shops and amenities. The property briefly comprises of; entrance hallway, an open plan style living room, kitchen with central breakfast bar, utility room and downstairs cloakroom / W.C. To the first floor are three double bedrooms and a family bathroom with three piece suite. Outside to the front and rear are enclosed low maintenance gardens.

Viewings will be required and under a block viewing schedule.

### Viewing

Please contact our Jones Potts Taylor Office on 01942 368600 if you wish to arrange a viewing appointment for this property or require further information.



3



2



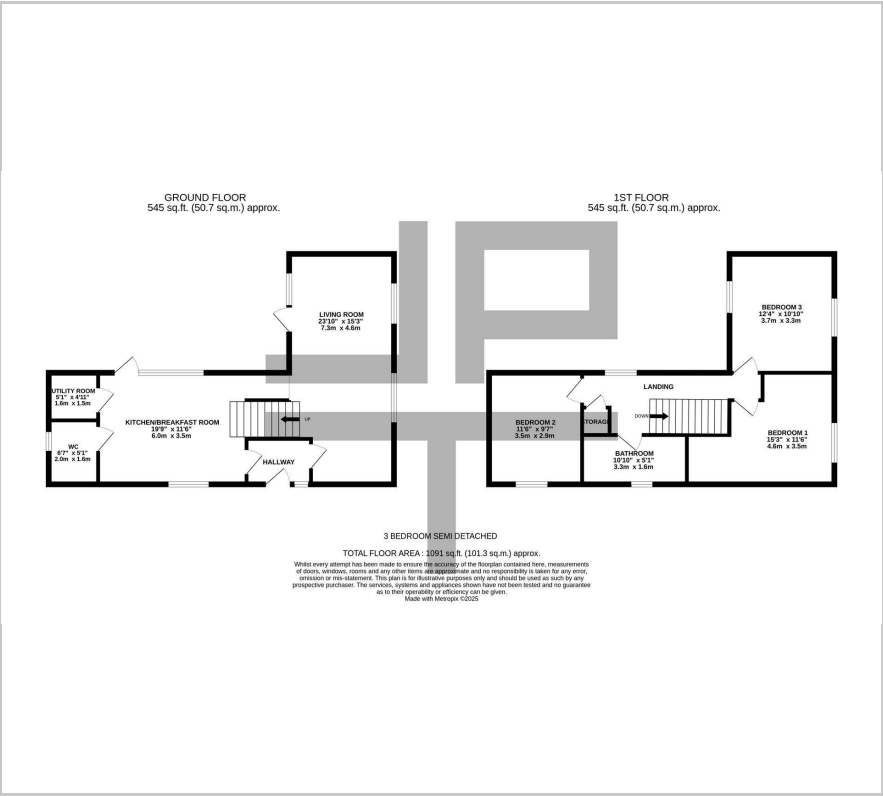
1



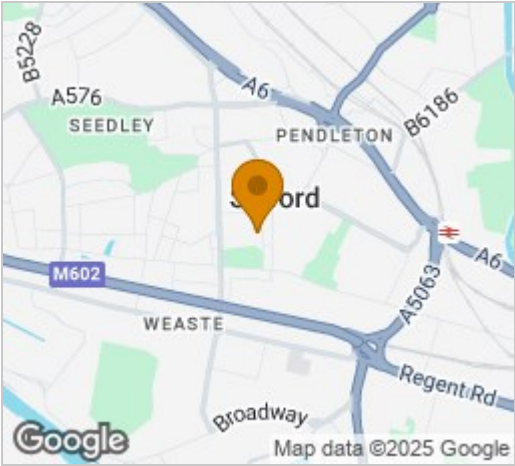
B



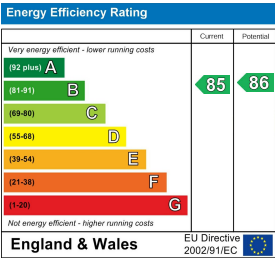
Floor Plan



Area Map



Energy Efficiency Graph



These particulars, whilst believed to be accurate are set out as a general outline only for guidance and do not constitute any part of an offer or contract. Intending purchasers should not rely on them as statements of representation of fact, but must satisfy themselves by inspection or otherwise as to their accuracy. No person in this firms employment has the authority to make or give any representation or warranty in respect of the property.