



JONES POTTS TAYLOR



87 Gordon Street

, Leigh, WN7 1RW

£750 PCM

JonesPottsTaylor are pleased to present TO LET this two bedroom, pavement fronted, mid-terrace property. Located in Leigh, close to schools, shops and amenities. The property briefly comprises of; entrance vestibule, living room, a separate dining room with French doors opening to the rear yard and kitchen. To the first floor are two well-proportioned bedrooms, master benefitting from fitted wardrobes and a further family bathroom with three piece suite. Outside to the rear is an enclosed low maintenance garden.

Viewings will be required and under a block viewing schedule.

Viewing

Please contact our Jones Potts Taylor Office on 01942 368600 if you wish to arrange a viewing appointment for this property or require further information.



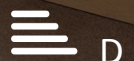
2



1

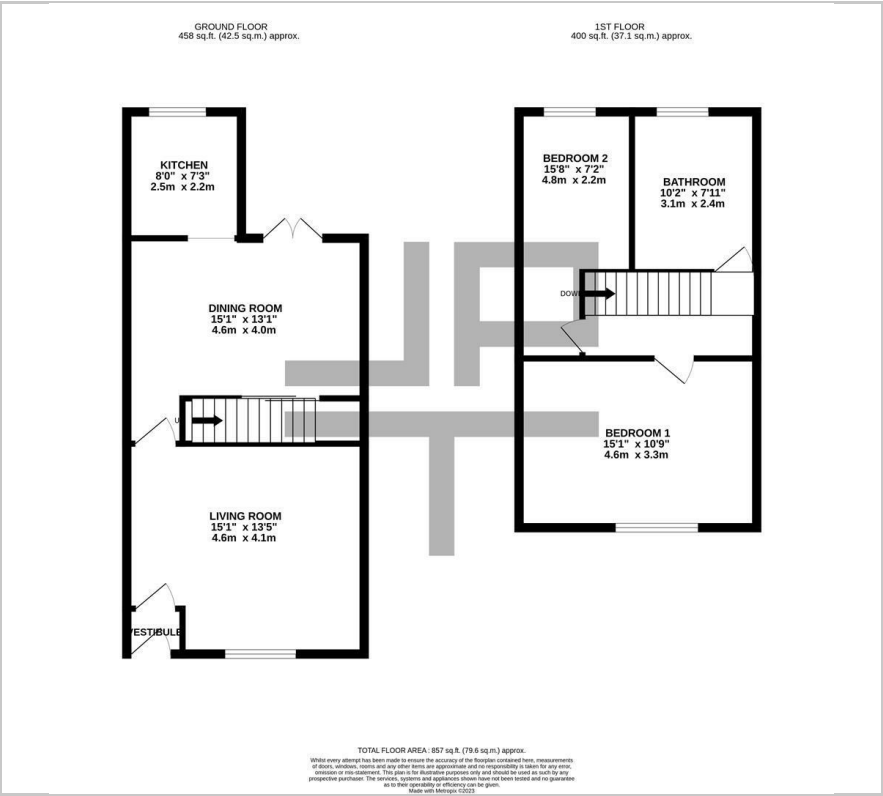


2



D

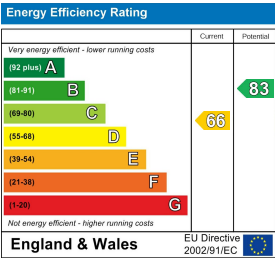
Floor Plan



Area Map



Energy Efficiency Graph



These particulars, whilst believed to be accurate are set out as a general outline only for guidance and do not constitute any part of an offer or contract. Intending purchasers should not rely on them as statements of representation of fact, but must satisfy themselves by inspection or otherwise as to their accuracy. No person in this firms employment has the authority to make or give any representation or warranty in respect of the property.