



JONES POTTS TAYLOR



38 Manchester Road

, Leigh, WN7 2AZ

£895 PCM

JonesPottsTaylor are pleased to present TO LET this three bedroom, garden fronted, mid-terrace property. Located in a sought after residential area in Leigh, close to network and transport links, schools, shops and amenities. The property briefly comprises of; entrance vestibule, living room, kitchen / dining room and a small hallway leads to a downstairs family bathroom with three piece suite. To the first floor are three well proportioned bedrooms. Outside to the front and rear are enclosed low maintenance gardens.

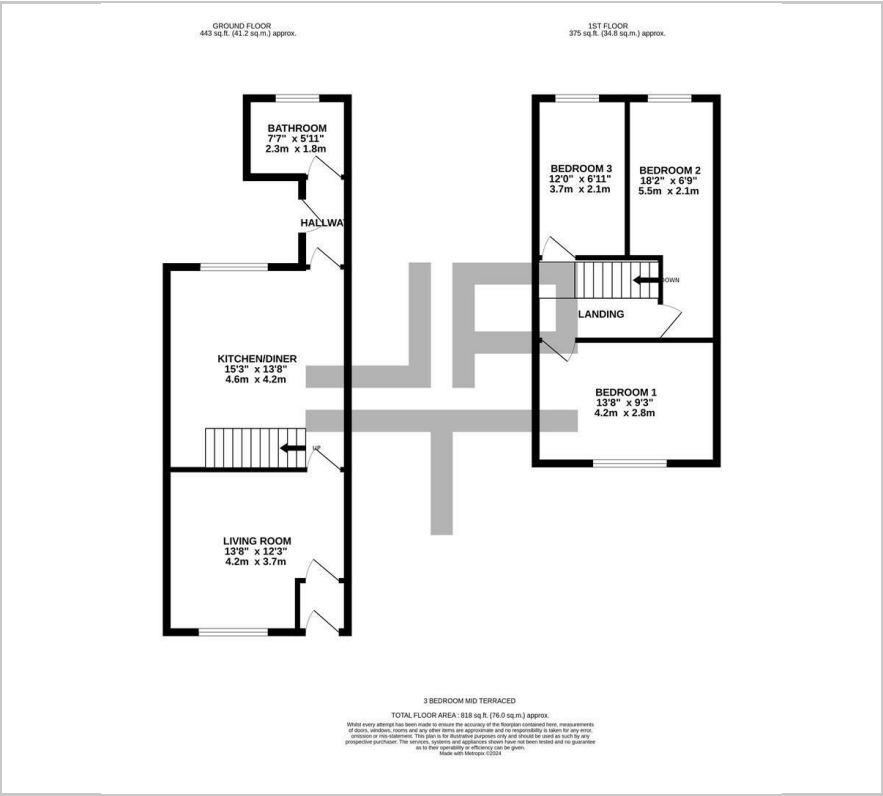
Viewings will be required and under a block viewing schedule.

Viewing

Please contact our Jones Potts Taylor Office on 01942 368600 if you wish to arrange a viewing appointment for this property or require further information.



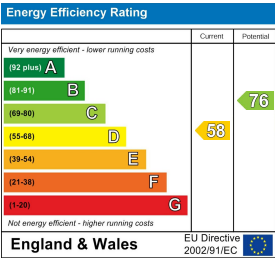
Floor Plan



Area Map



Energy Efficiency Graph



These particulars, whilst believed to be accurate are set out as a general outline only for guidance and do not constitute any part of an offer or contract. Intending purchasers should not rely on them as statements of representation of fact, but must satisfy themselves by inspection or otherwise as to their accuracy. No person in this firm's employment has the authority to make or give any representation or warranty in respect of the property.