



JONES POTTS TAYLOR



51 Wyre Drive

Worsley, Manchester, M28 1HH

Offers in excess of £250,000

JonesPottsTaylor are delighted to present FOR SALE this two bedroom detached true bungalow. Situated in a sought after residential location in Worsley, close to transport and network links, schools, shops and amenities. The property briefly comprises of a front entrance way which leads to an internal garage car port and a secondary entrance through to the kitchen / dining room, sitting room, two well proportioned bedrooms, master benefitting from fitted wardrobes, and a further shower room with three piece suite. Outside to the front is an open garden with private driveway, whilst to the rear is an enclosed low maintenance garden.

Viewings for this property are a must to appreciate the potential development opportunity.

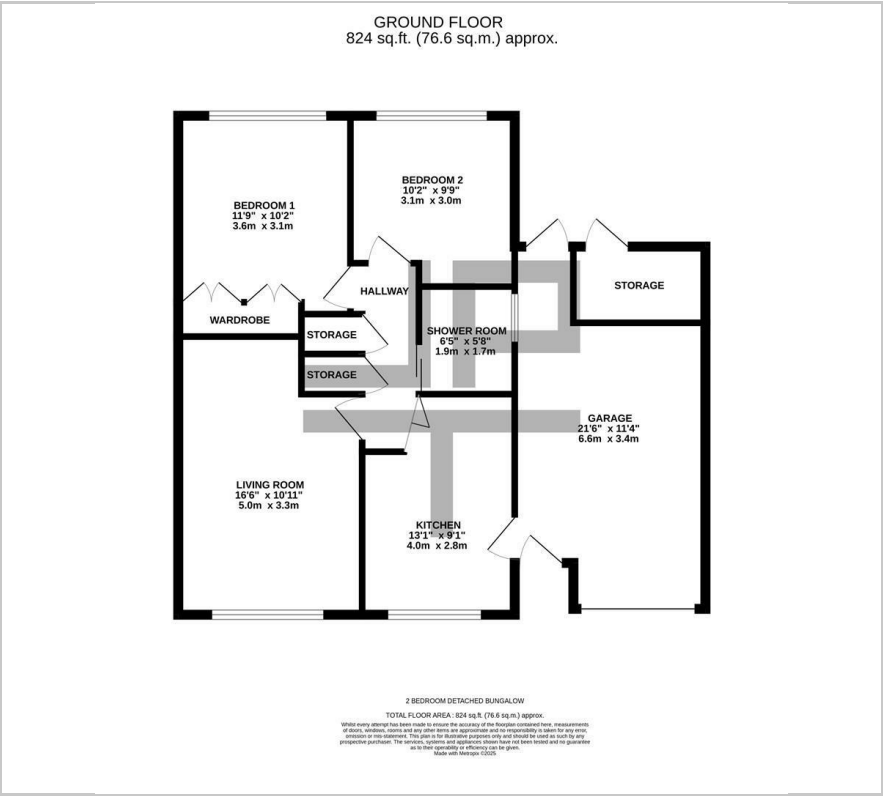
Viewing

Please contact our Jones Potts Taylor Office on 01942 368600 if you wish to arrange a viewing appointment for this property or require further information.

- No Onward Chain
- Potential Development Opportunity
- Sought After Residential Location
- Private Driveway & Garage Port
- Two Double Bedrooms
- Gas Central Heating & UPVC Double Glazed Windows



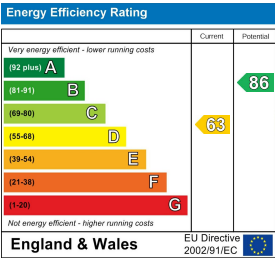
Floor Plan



Area Map



Energy Efficiency Graph



These particulars, whilst believed to be accurate are set out as a general outline only for guidance and do not constitute any part of an offer or contract. Intending purchasers should not rely on them as statements of representation of fact, but must satisfy themselves by inspection or otherwise as to their accuracy. No person in this firms employment has the authority to make or give any representation or warranty in respect of the property.