



JONES POTTS TAYLOR



84 Lawson Avenue

, Leigh, WN7 5NP

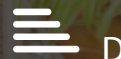
£269,950

JonesPottsTaylor are delighted to present FOR SALE this extended four bedroom link-detached property. Situated in a sought after location in Leigh, close to both primary and secondary schools, shops and amenities. The property briefly comprises of; entrance porch, sitting room with feature fireplace, a separate dining room, kitchen and conservatory benefitting from French doors leading to the rear garden. To the first floor are three double bedrooms, two of which feature fitted wardrobes, a single bedroom and a further three piece family bathroom. Outside to the front is a driveway with access to an integral garage, whilst to the rear is an enclosed low maintenance, private garden. Viewings for this property are a must, offering generous living space and garden privacy.

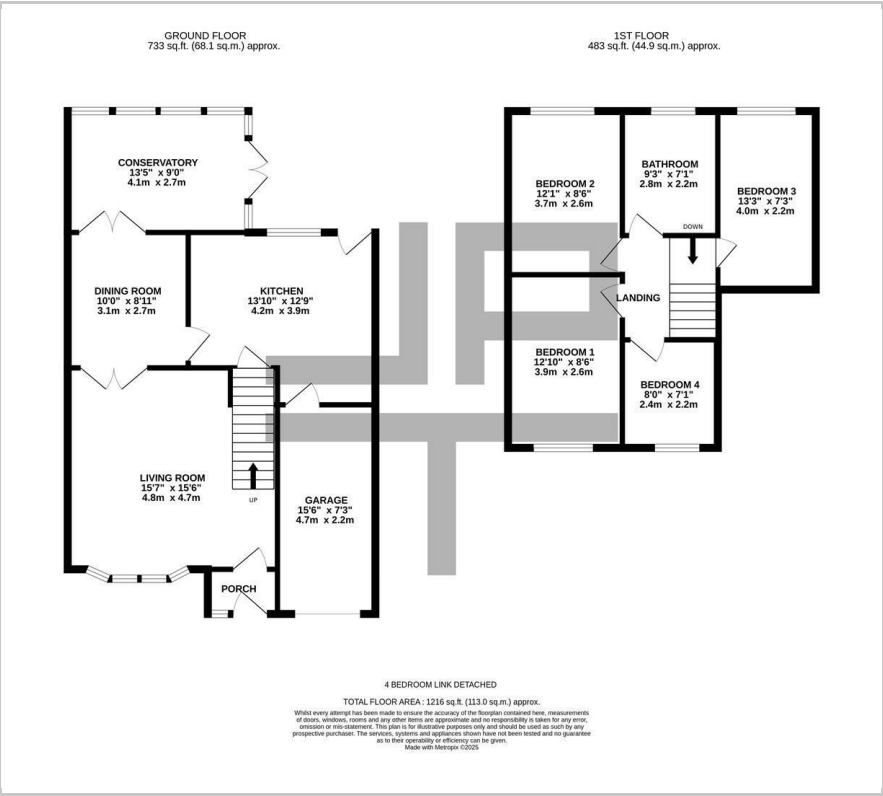
- An Extended Link-Detached Plot
- Within Primary & Secondary School Catchment Area
- Integral Garage & Driveway
- Boarded Loft
- Private Rear Garden
- Gas Central Heating & Double Glazed UPVC Windows

Viewing

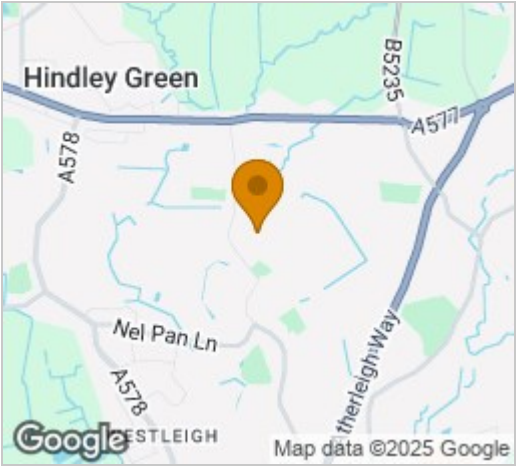
Please contact our Jones Potts Taylor Office on 01942 368600 if you wish to arrange a viewing appointment for this property or require further information.



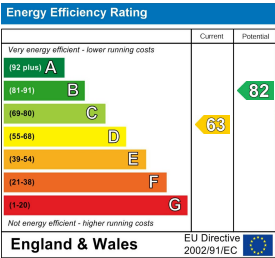
Floor Plan



Area Map



Energy Efficiency Graph



These particulars, whilst believed to be accurate are set out as a general outline only for guidance and do not constitute any part of an offer or contract. Intending purchasers should not rely on them as statements of representation of fact, but must satisfy themselves by inspection or otherwise as to their accuracy. No person in this firms employment has the authority to make or give any representation or warranty in respect of the property.