



JONES POTTS TAYLOR



15 Firs Lane

, Leigh, WN7 4SA

£140,000

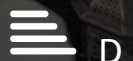
JonesPottsTaylor are pleased to present FOR SALE this well-presented three bedroom end terrace property. Situated in a popular residential location in Leigh, close to transport and network links, schools, shops and amenities. The property briefly comprises of; entrance into sitting room, a separate dining room, kitchen and a downstairs family bathroom with three piece suite. To the first floor is a large double bedroom and two equally sized, well proportioned bedrooms. Outside to the rear is a enclosed garden, benefitting from double gates, providing off road parking.

Viewings for this property are a must to appreciate the living space and investment opportunity.

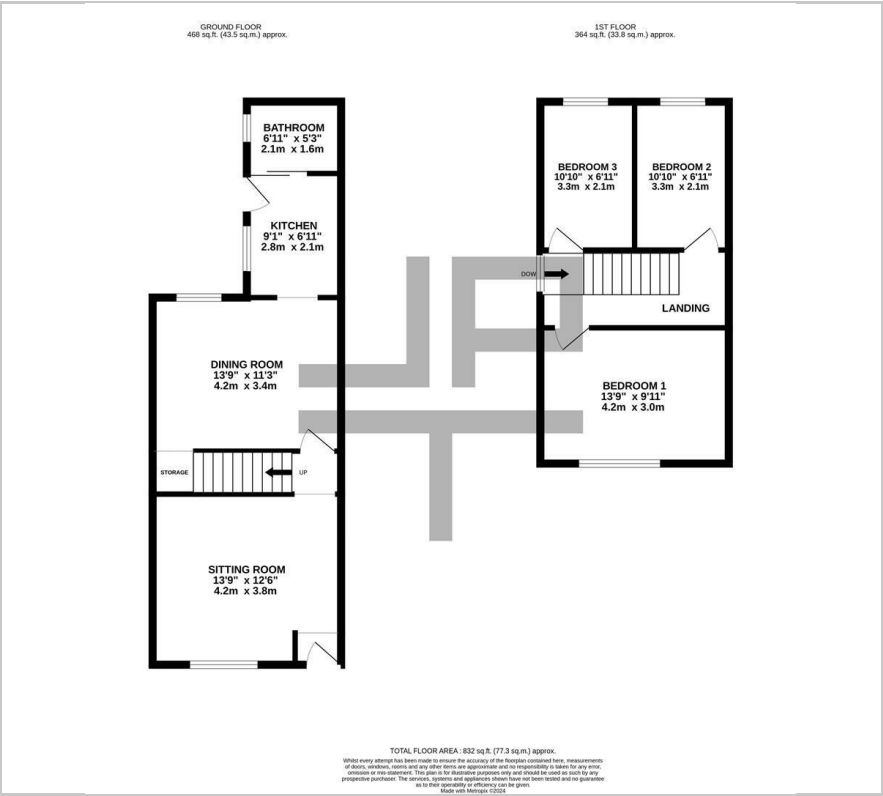
- Off Road Parking Available
- Potential Investment Opportunity
- Close To Transport & Network Links
- Two Reception Rooms
- Three Well Proportioned Bedrooms
- Gas Central Heating & UPVC Windows

Viewing

Please contact our Jones Potts Taylor Office on 01942 368600 if you wish to arrange a viewing appointment for this property or require further information.



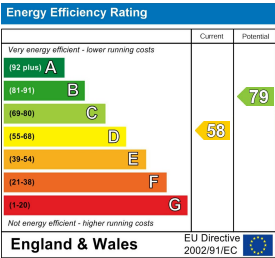
Floor Plan



Area Map



Energy Efficiency Graph



These particulars, whilst believed to be accurate are set out as a general outline only for guidance and do not constitute any part of an offer or contract. Intending purchasers should not rely on them as statements of representation of fact, but must satisfy themselves by inspection or otherwise as to their accuracy. No person in this firms employment has the authority to make or give any representation or warranty in respect of the property.