



## 50 Twist Lane

, Leigh, WN7 4DA

£160,000

JonesPottsTaylor are delighted to present FOR SALE this deceptively spacious, garden fronted, three bedroom mid-terrace property. Situated in a residential location in Leigh, close to network and transport links, schools, shops and amenities. The property briefly comprises of; entrance porch, hallway, living room, a separate dining room, a further hallway leading to a utility / downstairs W.C and kitchen. To the first floor are three double bedrooms and a three piece family bathroom. Outside to the front and rear is an enclosed low maintenance garden.

Viewings for this property are highly recommended to be able to appreciate the living space and potential investment opportunity.

- No Onward Chain
- Potential Investment Opportunity
- Three Double Bedrooms
- Generous Downstairs Living Space
- Gas Central Heating
- Double Glazed UPVC Windows

### Viewing

Please contact our Jones Potts Taylor Office on 01942 368600 if you wish to arrange a viewing appointment for this property or require further information.

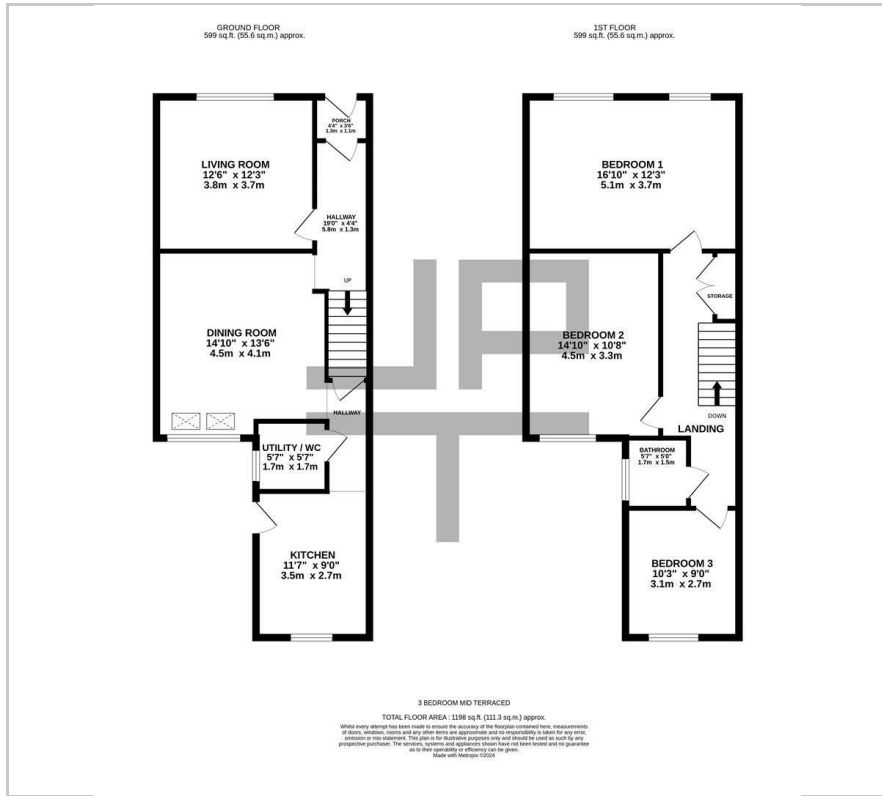


D





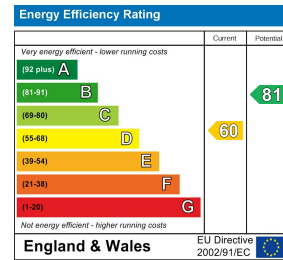
## Floor Plan



## Area Map



## Energy Efficiency Graph



These particulars, whilst believed to be accurate are set out as a general outline only for guidance and do not constitute any part of an offer or contract. Intending purchasers should not rely on them as statements of representation of fact, but must satisfy themselves by inspection or otherwise as to their accuracy. No person in this firm's employment has the authority to make or give any representation or warranty in respect of the property.