



3 Cheryl Court

Cuddington, Northwich, CW8 2LP

£225,000

JonesPottsTaylor are delighted to present FOR SALE this three bedroom semi-detached dormer bungalow. Located in the sought after village of Cuddington and situated close to schools, shops and amenities including the railway station and the A49. The property briefly comprises of; entrance hallway, an open plan living and dining room, kitchen, shower room and a double bedroom. To the first floor are two double bedrooms and a large walk in storage space. Outside to the rear are enclosed garden, whilst to the front is an open garden with the side benefitting from a large driveway, garage and outside W.C/storage.

Viewings are highly recommended to appreciate the size and storage space of this property.

Viewing

Please contact our Jones Potts Taylor Office on 01942 368600 if you wish to arrange a viewing appointment for this property or require further information.

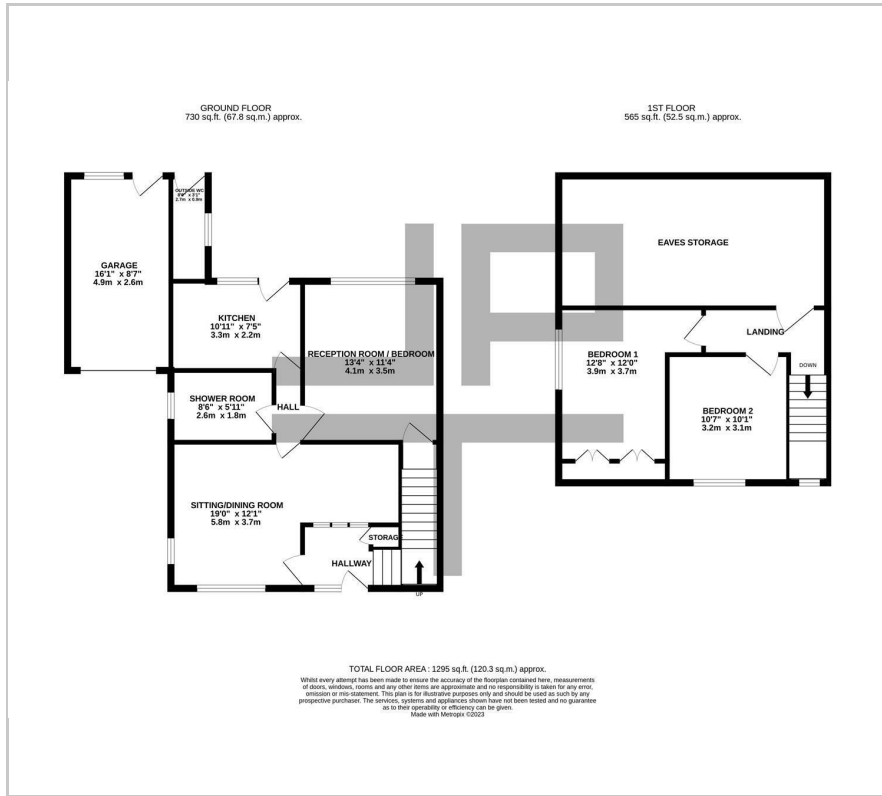
- No Onward Chain
- Cul-de-sac Location
- Newly Refurbished
- Generous Storage Space
- Potential Development Growth
- Gas Central Heating



D



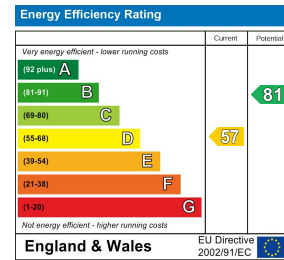
Floor Plan



Area Map



Energy Efficiency Graph



These particulars, whilst believed to be accurate are set out as a general outline only for guidance and do not constitute any part of an offer or contract. Intending purchasers should not rely on them as statements of representation of fact, but must satisfy themselves by inspection or otherwise as to their accuracy. No person in this firm's employment has the authority to make or give any representation or warranty in respect of the property.